

AERONET™

COMPRESSION RESISTANT VENTILATION MAT installation instructions

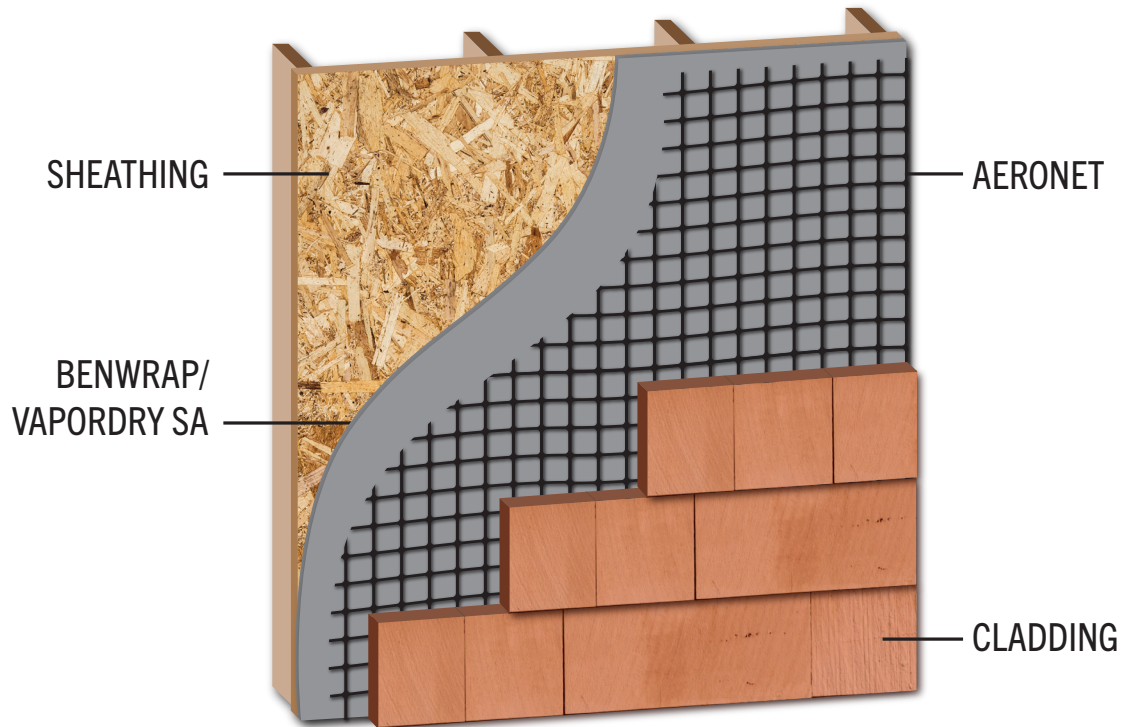
AERONET™ VENTILATION MAT INSTALLATION INSTRUCTIONS

aeronet™ ventilation mat

hydroflash®

accessories

AERONET™ VENTILATION MAT GENERAL INSTALLATION



- Install water resistive barrier or underlayment (i.e. BenWrap™, VaporDry® SA) per manufacturer's installation instructions. Install AeroNet™ after windows are properly installed and flashed. Refer to window installation details on flashing integration. Refer to bottom detail to deter insect infiltration.
- Unroll AeroNet™ with the "feet" against the weather resistive barrier or underlayment. The flat side should be against the back of the roofing or siding material. Attach the product with 1" cap nails (or 7/8" staple) about every 2 feet along the perimeter and about every 9 square feet in the field.
- Butt edges of new rolls or new courses together - Do not overlap layers of AeroNet™.
- Install roofing or siding to the flat surface of AeroNet™ with longer fasteners to accommodate the additional 1/4 in. thickness per manufacturer's installation instructions within 120 days of application. DO NOT USE WITH ASPHALT SHINGLES.

AERONET™ VENTILATION MAT INSTALLATION INSTRUCTIONS

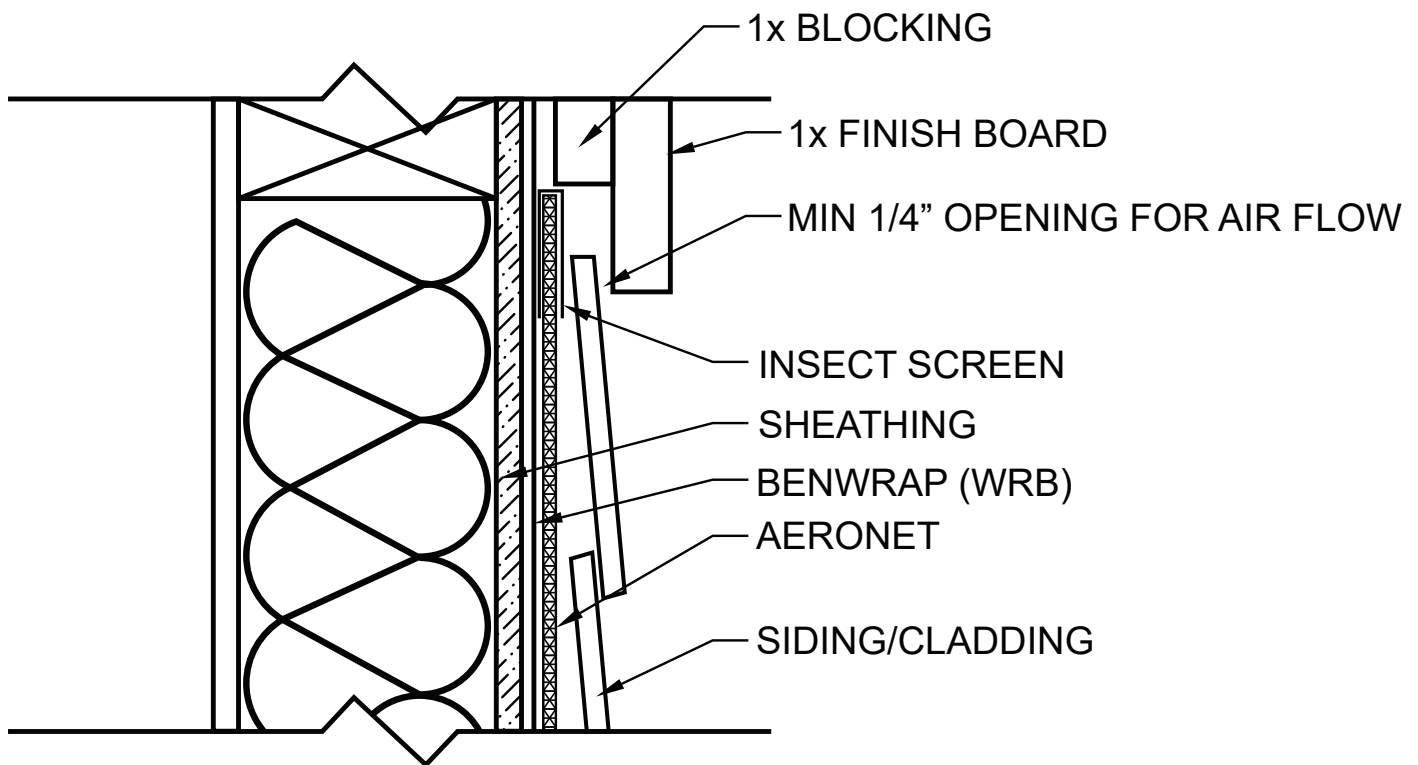
aeronet™ ventilation mat

hydroflash®

accessories

AERONET™ VENTILATION MAT GENERAL INSTALLATION

Top of Wall Detail



- Run AeroNet™ within 3 inches of soffit overhang. Install a 1 inch x 3 inch board in the space between the top of AeroNet™ and bottom of soffit. Install siding within 4 inches of soffit overhang. Install a 1 inch x 6 inch finish trim board or 6 inch piece of siding over the 1 inch x 3 inch board. This will allow for air movement, which will provide convective drying and ventilation behind the cladding. Apply insect screen or a 6 inch wide window screen material (1/8 inch max. hole size; as indicated in bottom detail) to top edge of AeroNet™.

NOTE: Leave 1/4 inch gap at top opening for AeroNet™. Top detail not required. To maximize the convective airflow, AeroNet™ should be vented at the top of the wall or ridge of the roof.

AERONET™ VENTILATION MAT INSTALLATION INSTRUCTIONS

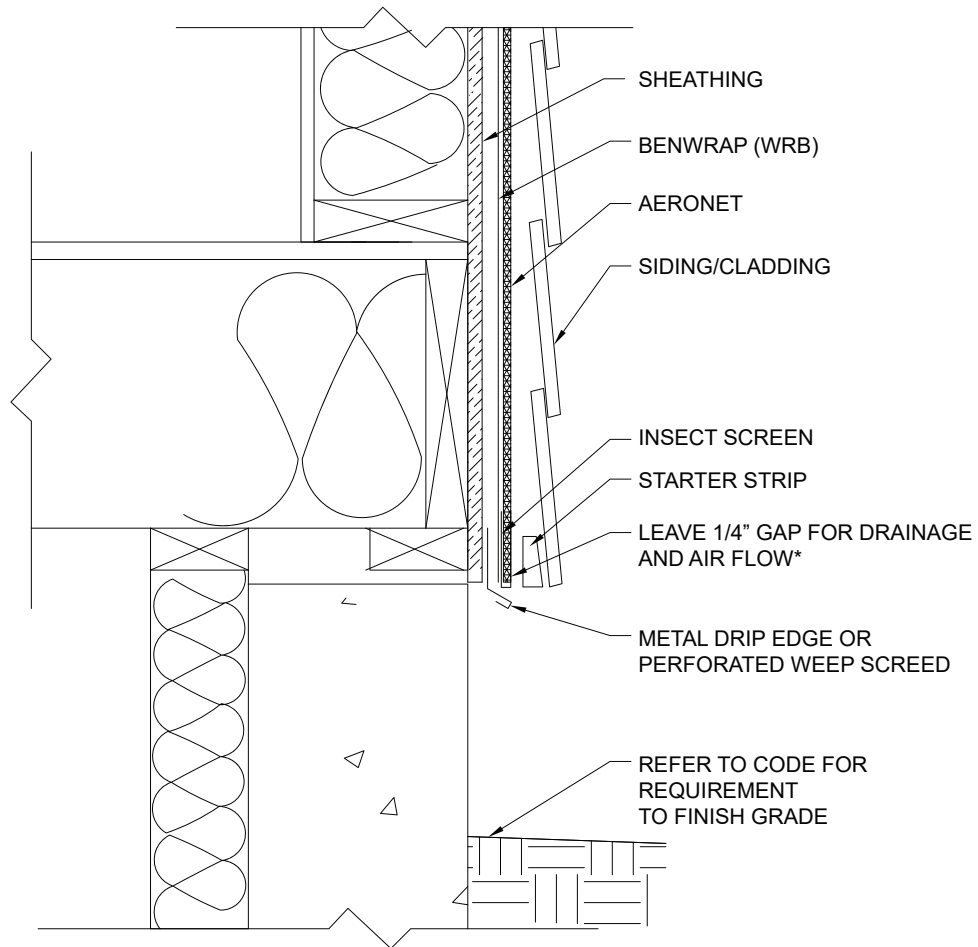
aeronet™ ventilation mat

hydroflash®

accessories

AERONET™ VENTILATION MAT GENERAL INSTALLATION

Bottom of Wall Detail



- To prevent insect infiltration along bottom edge of siding, attach insect screen or a 6 inch wide window screen material (1/8 inch max. hole size) along the wall 3 inches above bottom edge of AeroNet™. Fold up onto outer surface of installed AeroNet™ and fasten with a cap nail to hold in place prior to applying siding or cladding.

NOTE: The bottom of AeroNet™ must be left open to the atmosphere for proper drainage and ventilation.

AERONET™ VENTILATION MAT INSTALLATION INSTRUCTIONS

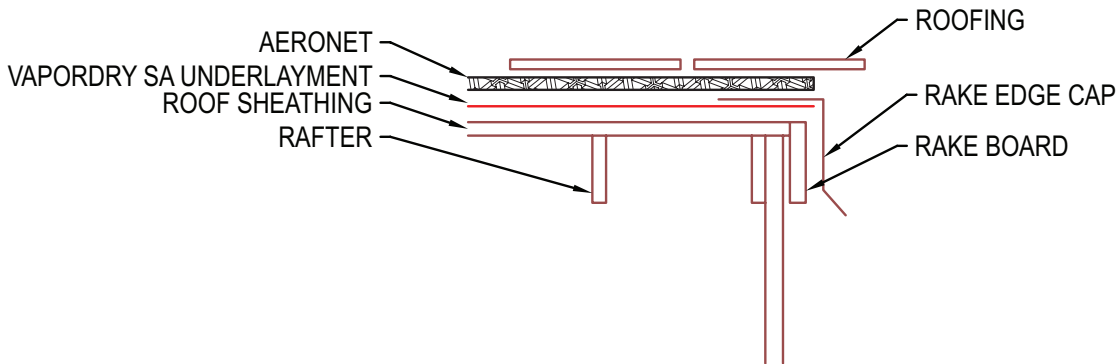
aeronet™ ventilation mat

hydroflash®

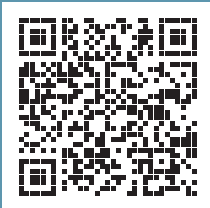
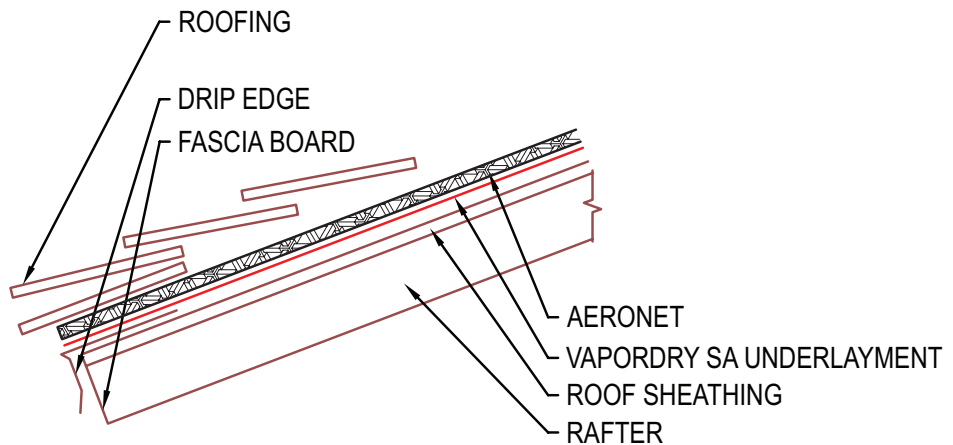
accessories

AERONET™ VENTILATION MAT RAKE & DRIP EDGE DETAIL

Rake



Drip Edge



VIRTUAL JOBSITE VISIT

Project specific installation training and window mockups are recommended to verify proper details and reduce the learning curve for installers and design professionals.

Please contact us at techsupport@obdyke.com, or fill out the request form on our website, OR SCAN THE QR CODE HERE.

800.523.5261
techsupport@obdyke.com

BENJAMIN OBDYKE
roof & wall products