

HYDROTAPE DOUBLE SIDED TAPE

installation instructions



HYDROTAPE® DS INSTALLATION INSTRUCTIONS

REVIEW PRIOR TO INSTALLATION OF WRBs & FLASHINGS

PREINSTALLATION CONSIDERATIONS

Unroll WRB with printed side and spacers facing out and fasten to sheathing with nails, staples, or cap fasteners

Fasteners should provide a minimum of 1/2 inch penetration into the nail base and be spaced approximately 12 to 18 inches apart along the horizontal and vertical laps. Fasten every 3 sq ft elsewhere

HydroGap® should be installed shingle lap fashion (ie. begin installation at the base of the wall assembly)

Extend the housewrap a minimum 2 inches over the sill plate

Overlap all horizontal seams by at least 4 inches, all vertical seams by at least 6 inches, and all inside and outside corners by 12 inches.

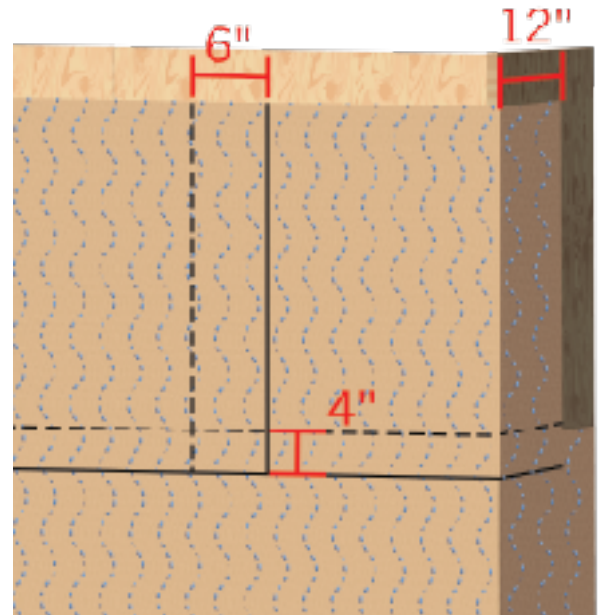
Be sure that the housewrap installation and flashing provide positive drainage to the exterior of the assembly.

Flash wall penetrations (such as outlets, exhaust vents, etc.) with proper shingling technique to maintain drainage

Flash windows and doors according to building code requirements. Surface should be clean and dry. All self-adhered flashing must be adhered using a hand applicator. HydroFlash® should be stored inside or in conditioned spaces prior to installing in cold temperatures.

Install windows and doors per manufacturer's installation instructions

Tape all holes and tears that may have been inadvertently introduced during the construction process



VIRTUAL JOBSITE VISIT

Project specific installation training and window mockups are recommended to verify proper details and reduce the learning curve for installers and design professionals. Please contact us at techsupport@obdyke.com, or fill out the request form on our website,

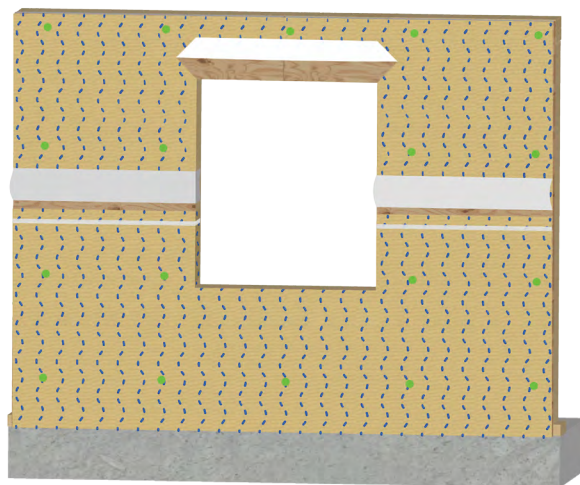
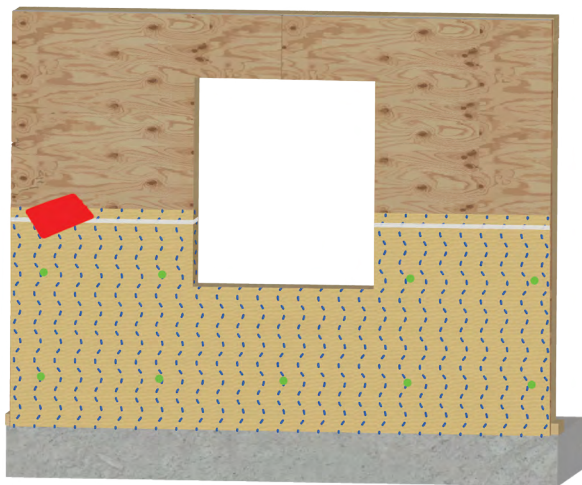
OR SCAN THE QR CODE HERE.



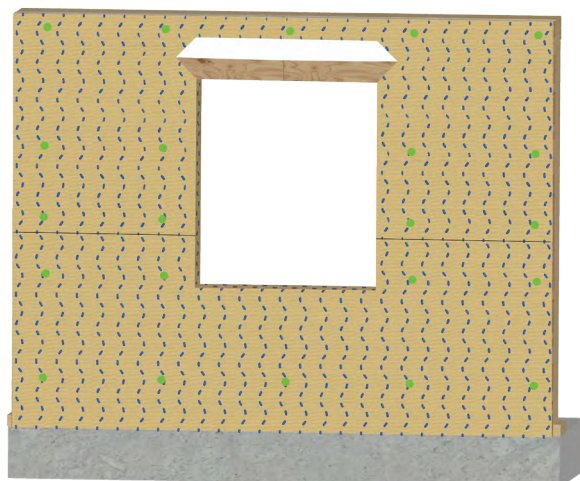
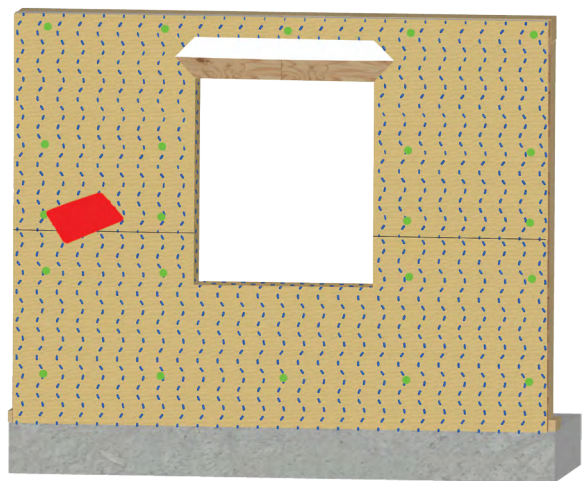
HYDROTAPE® DS INSTALLATION INSTRUCTIONS

HYDROTAPE DS INSTALLATION

Horizontal Seams



- After the first row of housewrap is installed, unroll the HydroTape DS and apply the adhesive directly to the housewrap about 2 inches down from the top; **Apply pressure to the release liner to activate adhesive to the Housewrap.**
- Install the next row of housewrap to achieve the proper shingle overlaps. Do not fasten the bottom 10 inches, at this point, allowing it to be folded up.

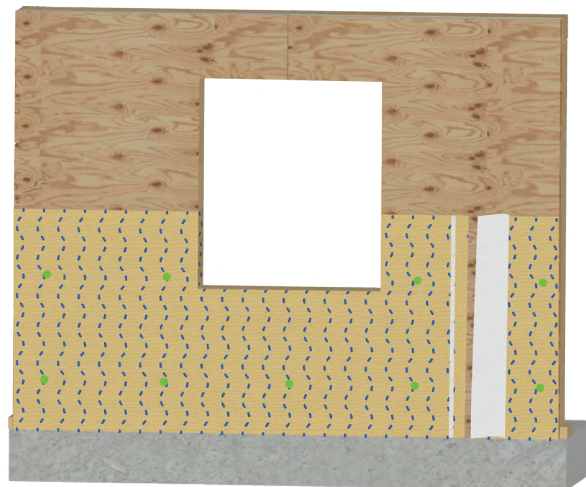
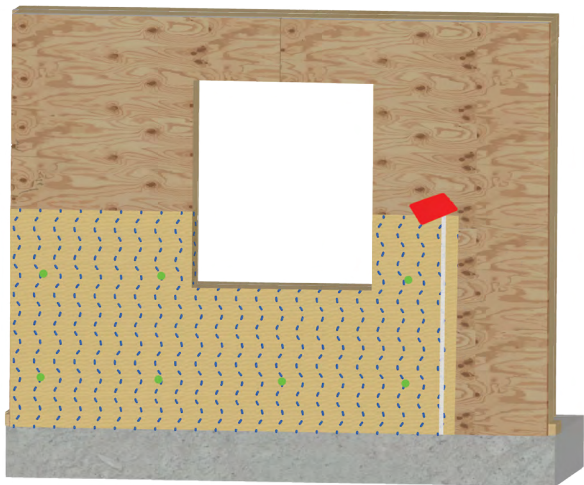


- Fold the top layer of housewrap away from the seam, remove the release liner from HydroTape DS, and let the housewrap flap down over the HydroTape DS. Apply pressure to the face of the housewrap using a hand applicator or a roller.
- Apply cap fasteners to the overlap.

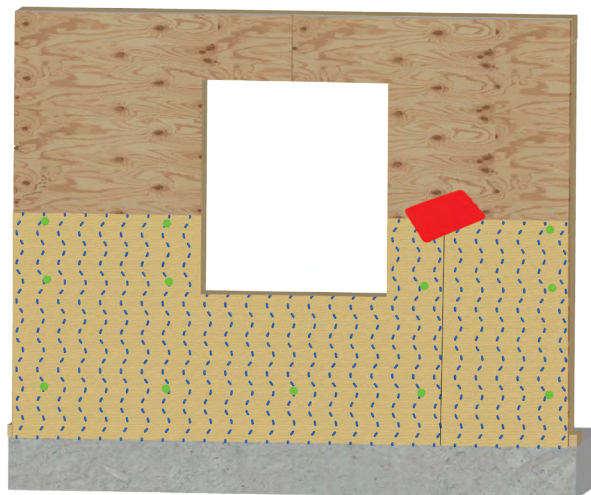
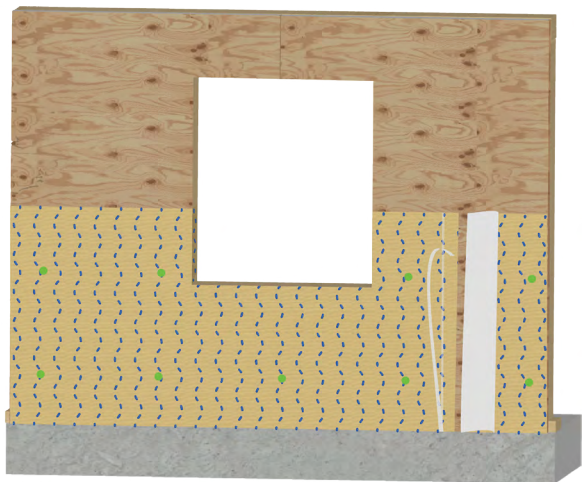
HYDROTAPE® DS INSTALLATION INSTRUCTIONS

HYDROTAPE DS INSTALLATION

Vertical Seams



- At the end of the course where the overlap will occur, unroll the HydroTape DS and apply the adhesive directly to the housewrap about 2 inches in from the end; **Apply pressure to the release liner to activate adhesive to the Housewrap.**
- Install the next section of housewrap, allowing for a minimum 6 inches overlap on the vertical seam. Do not fasten the first 10 inches at this point, allowing the side flap to be folded back.



- Fold the top layer of housewrap up and remove the release liner from HydroTape DS and apply pressure to the face of the Housewrap using a hand applicator or a roller.
- Apply cap fasteners to the overlap.