

slicker® max rainscreen

hydroflash®

accessories

SLICKER® MAX RAINSCREEN

installation instructions

SLICKER® MAX RAINSCREEN INSTALLATION INSTRUCTIONS

slicker® rainscreen

hydroflash®

accessories

SYSTEM WARRANTY REQUIREMENTS

Do you have what you need to achieve the Slicker® MAX Rainscreen System Warranty?

- ☐ **WATER RESISTIVE BARRIER**
Benjamin Obdyke® WRB
- ☐ **RAINSCREEN**
Benjamin Obdyke® Slicker® Rainscreen Family
- ☐ **WINDOW FLASHING OPTIONS**
Benjamin Obdyke® HydroFlash®
- ☐ **FASTENERS**
Cap Fasteners or Staples
- ☐ **ACCESSORIES (optional)**
Benjamin Obdyke® HydroCorner® Sill Treatment
Benjamin Obdyke® Batten UV
Benjamin Obdyke® HydroTape® DS

WHY SHOULD I BUILD WITH A SYSTEM?

engineered to work together **1**

one manufacturer **2**

comprehensive coverage **3**

OBDYKE PERFORMANCE BASED SYSTEMS

Benjamin Obdyke system warranties cover product defects,
but more importantly, **PRODUCT PERFORMANCE.**

\$20,000 labor & materials

transferable

comprehensive

performance based

SLICKER® MAX RAINSCREEN INSTALLATION INSTRUCTIONS

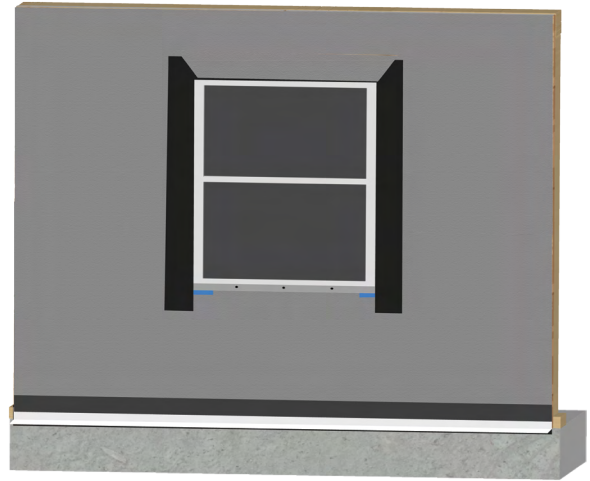
slicker® max rainscreen

hydroflash®

accessories

SLICKER® MAX PREINSTALLATION CONSIDERATIONS

Before installing Slicker® Max, all windows and doors must be properly installed and integrated with a Water Resistant Barrier and Flashing. **See FlatWrap® HP Installation Instructions for proper WRB and flashing installation.**



Slicker® Max can be used with all siding types.

Unroll Slicker® Max with printed side and filter fabric facing out, on top of the housewrap or water resistant barrier, fasten with **staples or cap-fasteners**.

Fasten Slicker® Max every 18 inches on the perimeter and every 36 inches in the field.

Slicker® Max can be installed in any direction and still maintain its performance characteristics.

Verify nailer and nail pressure settings to prevent compression of Slicker® Max during cladding installation.

The bottom of the wall must be left open for drainage and drying. To maximize airflow, keep the top of the wall open. See top of wall detail for more information.

Slicker® Max should not be stored in direct sunlight.

Do not let rainscreen be exposed to sunlight in excess of 90 days prior to the installation of cladding.

VIRTUAL JOBSITE VISIT

Project specific installation training and window mockups are recommended to verify proper details and reduce the learning curve for installers and design professionals. Please contact us at techsupport@obdyke.com, fill out the request form on our website,

OR SCAN THE QR CODE HERE.



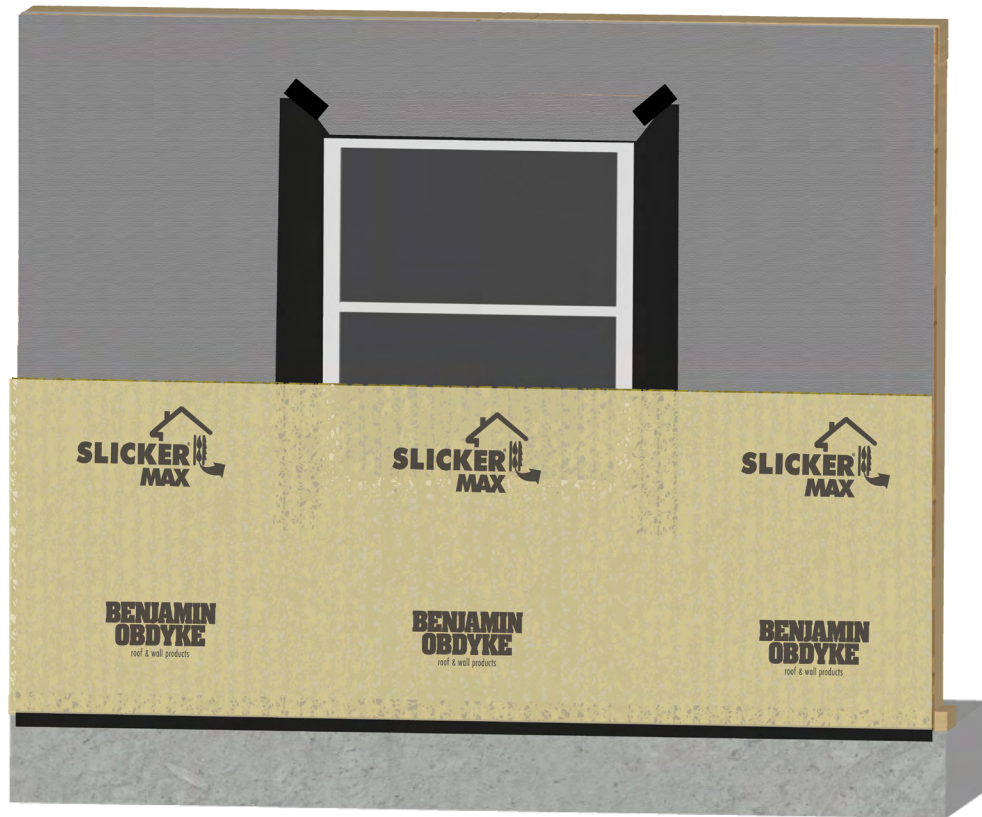
SLICKER® MAX RAINSCREEN INSTALLATION INSTRUCTIONS

slicker® max rainscreen

hydroflash®

accessories

SLICKER® MAX GENERAL INSTALLATION



- Apply a water resistive barrier (ie. FlatWrap® HP) directly to the sheathing and integrated with all penetrations using HydroFlash® flashing solutions.
- Install Slicker® Max after windows are properly installed and flashed. Start at the base of the wall and roll out Slicker® Max from left to right with the flap down and the fabric side against the cladding. On the bottom course only, fold the flap around the matrix and tuck it against the WRB (ie. FlatWrap® HP) to prevent insects from entering the channels. Nail or staple every 18 inches along the perimeter and every 36 inches on center in the field.
- Unroll the next course in the same manner as the previous course. Butt the edges of the new rolls or courses of Slicker® Max together without overlapping. Pull the flap over the previous course (shingle style) and staple.

*General Notes

All fasteners must be approved, corrosion resistant fasteners (stainless steel, hot-dipped zinc-coated, aluminum, etc.). Refer to local codes.

SLICKER® MAX RAINSCREEN INSTALLATION INSTRUCTIONS

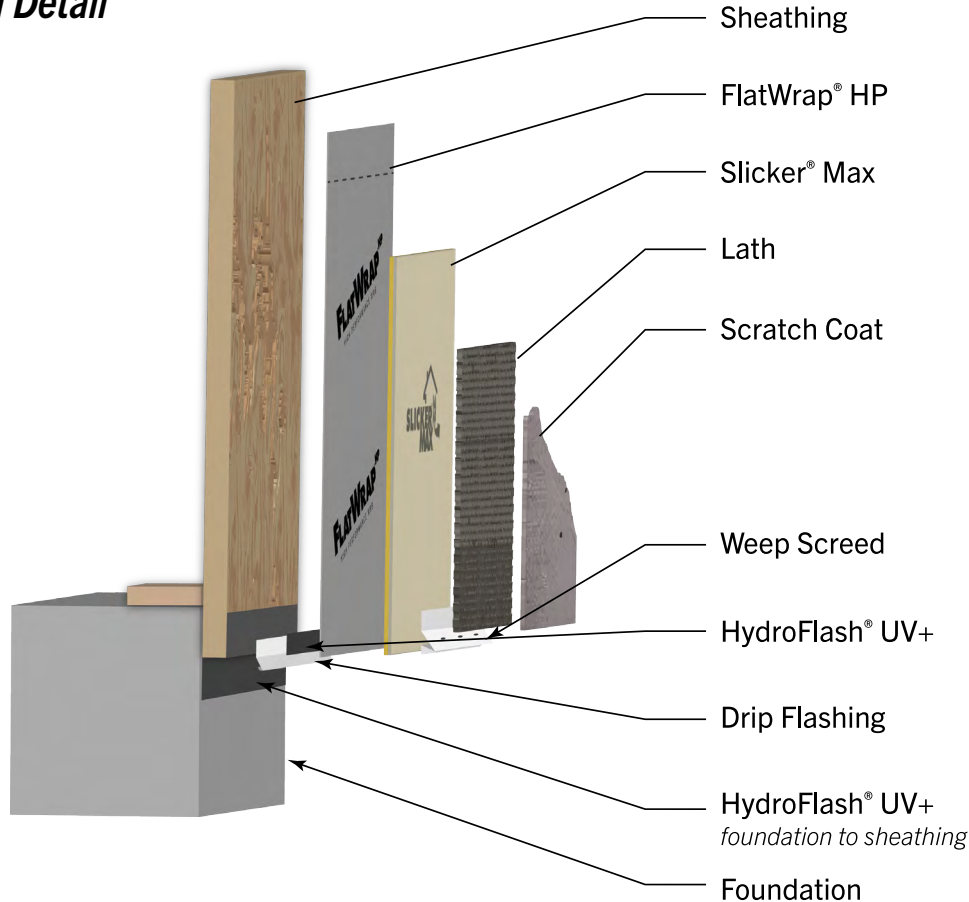
slicker® max rainscreen

hydroflash®

accessories

SLICKER® MAX MASONRY INSTALLATION

Bottom of Wall Detail



- For proper air sealing, install HydroFlash® UV+ to the foundation and sheathing. This detail allows proper air sealing around the bottom plate and foundation.
- After installing HydroFlash® to the foundation and sheathing, fasten z flashing or drip edge to the sheathing, against the applied HydroFlash UV+. This allows proper air sealing around the drip edge fasteners. For proper WRB and flashing integration, please see the FlatWrap® HP Installation Instructions.
- After properly integrating Benjamin Obdyke WRBs and Flashing with window and doors, the first course of Slicker® Max can be installed on the bottom of the wall.
- For proper drainage behind the masonry cladding, install a weep screed to the bottom of the first course of Slicker® Max.

General Notes

The bottom detail must be left open using a weep screed and drip edge. This will allow water to drain down and out of the system and allow air to flow up behind the masonry cladding.

SLICKER® MAX RAINSCREEN INSTALLATION INSTRUCTIONS

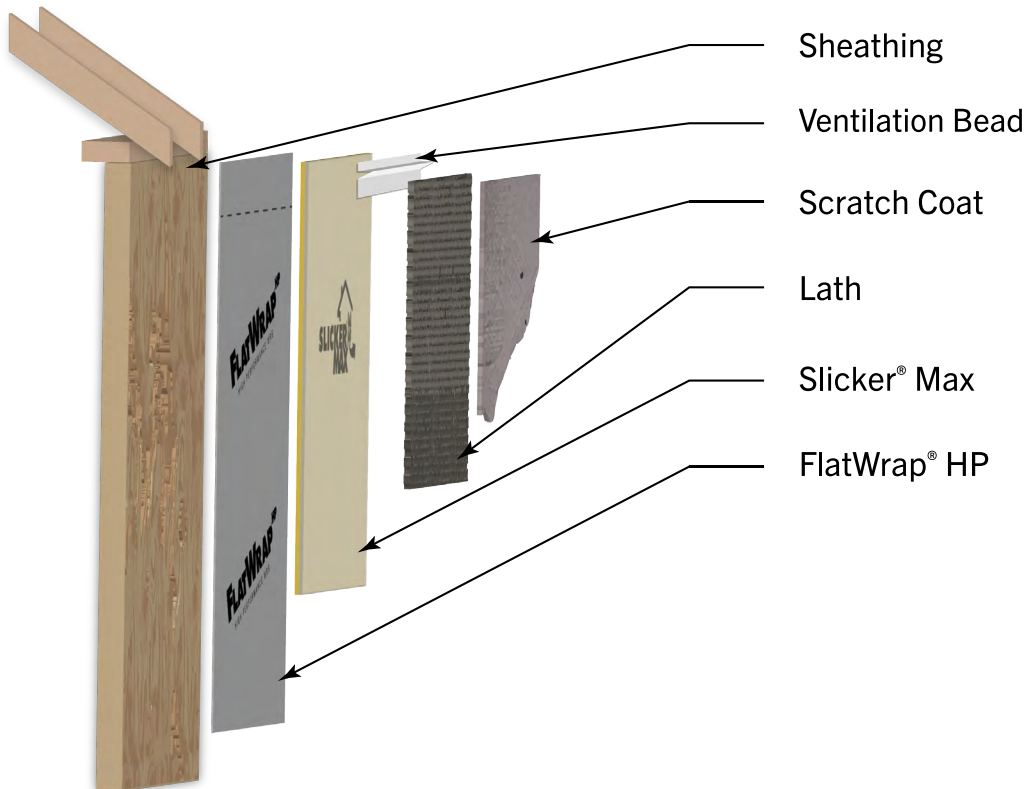
slicker® max rainscreen

hydroflash®

accessories

SLICKER® MAX MASONRY INSTALLATION

Top of Wall Detail



- When installing Slicker® Max, the top of the wall is should be left open to maximize airflow in the wall assembly. This can be accomplished by installing a weep screed upside down, or a premanufactured stucco bead, ideal for this application.
- After installing the weep screed or stucco bead, Slicker® Max can be rolled out, with the 3-inch filter fabric properly lapped over the bottom course.
- After completing all courses of Slicker® Max, the lath and scratch coat can be applied directly on top of the Slicker® Max filter fabric.

General Notes

This detail is recommended to maximize airflow, but not a requirement.

SLICKER® MAX RAINSCREEN INSTALLATION INSTRUCTIONS

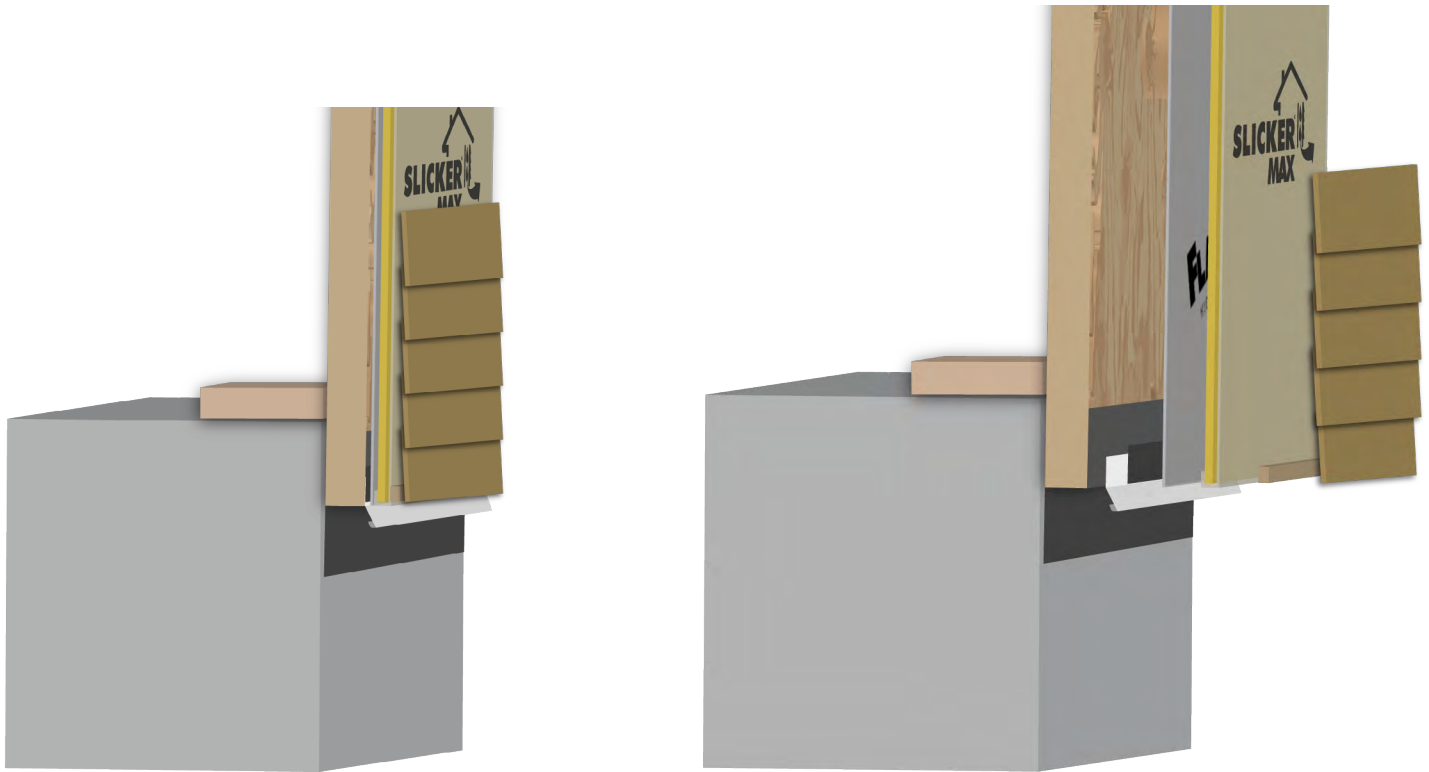
slicker® max rainscreen

hydroflash®

accessories

SLICKER® MAX CLADDING INSTALLATION

Bottom of Wall Detail



- To prevent insect infiltration along bottom edge of siding, fold the bottom factory edge of the filter fabric down and around the yellow entangled matrix. Attach with a staple or cap fastener.

**General Notes*

Leave 1/4 inch gap at the bottom opening for Slicker® Max.

SLICKER® MAX RAINSCREEN INSTALLATION INSTRUCTIONS

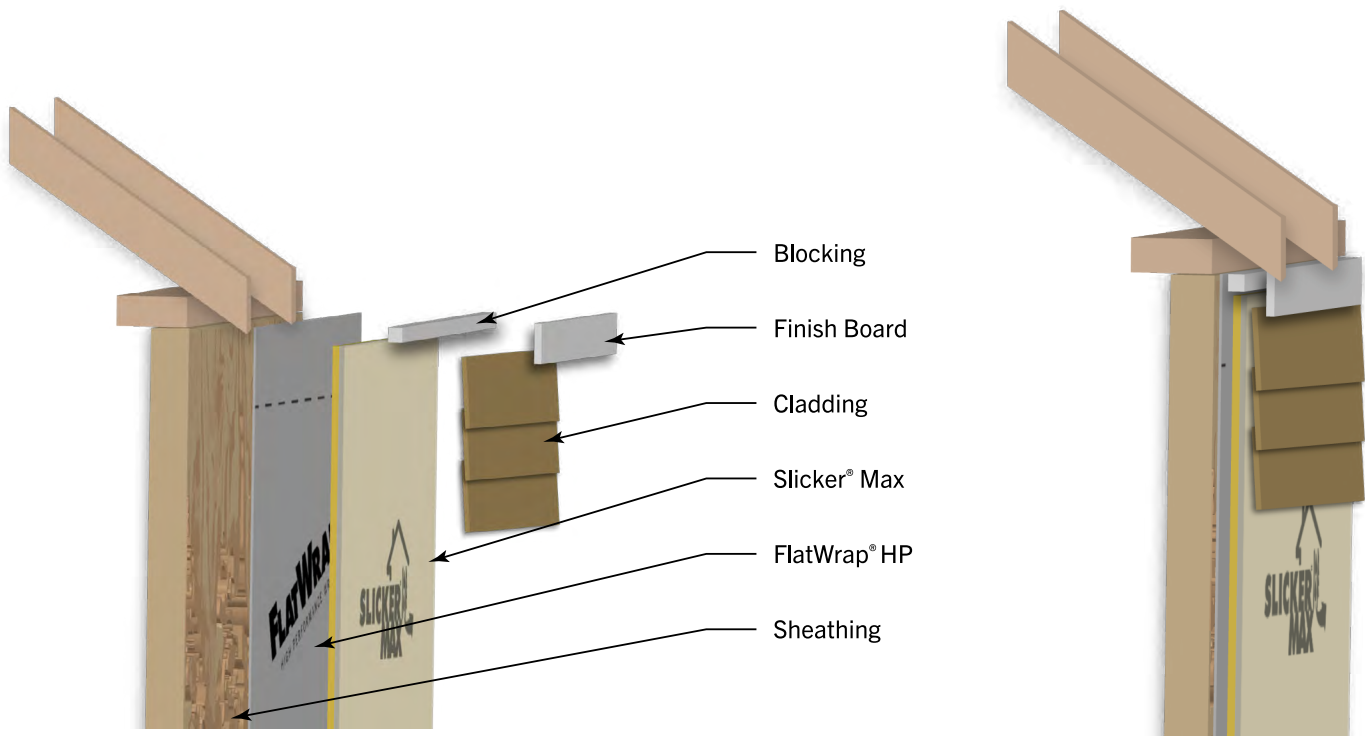
slicker® max rainscreen

hydroflash®

accessories

SLICKER® MAX CLADDING INSTALLATION

Top of Wall Detail



- When installing Slicker® Max, the top of the wall is should be left open to maximize airflow in the wall assembly. This can be accomplished by installing blocking before the finish trim board. This helps to leave 1/4 inch gap to maximize airflow behind the cladding.

General Notes

Leave 1/4 inch gap at the top opening for Slicker® Max. Recommended to maximize airflow, but not a requirement.