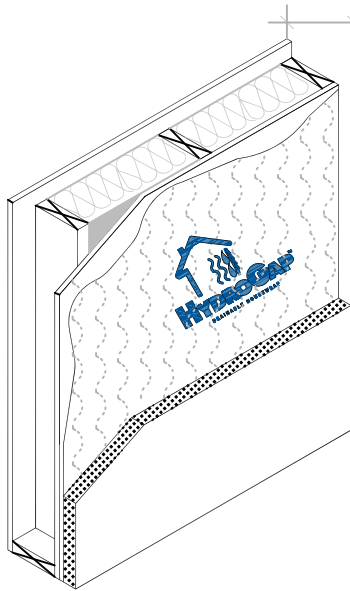
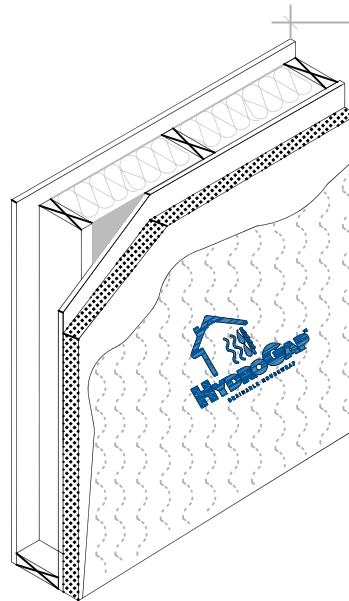


BENJAMIN OBDYKE



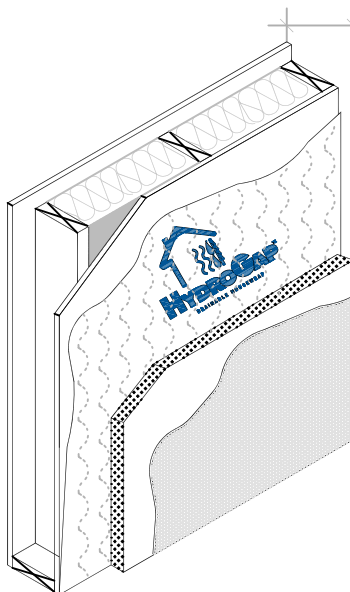
TYPICAL WALL ASSEMBLY
 GYPSUM BOARD
 AIR BARRIER/VAPOR RETARDER
 BATT INSULATION
 WOOD STUDS (METAL OPTIONAL)
 EXTERIOR SHEATHING
 HYDROGAP® DRAINABLE HOUSE WRAP
 RIGID FOAM INSULATION
 EXTERIOR CLADDING
 (SIDING, STUCCO, OR STONE)



TYPICAL WALL ASSEMBLY
 GYPSUM BOARD
 AIR BARRIER/VAPOR RETARDER
 BATT INSULATION
 WOOD STUDS (METAL OPTIONAL)
 EXTERIOR SHEATHING
 RIGID FOAM INSULATION
 HYDROGAP® DRAINABLE HOUSE WRAP
 EXTERIOR CLADDING
 (SIDING, STUCCO, OR STONE)

A TYPICAL WALL ISOMETRIC
 RESIDENTIAL WOOD FRAME STRUCTURE w/ STUCCO
 RIGID INSULATION INSTALLED OVER HYDROGAP

B TYPICAL WALL ISOMETRIC
 RESIDENTIAL WOOD FRAME STRUCTURE w/ STUCCO
 HYDROGAP INSTALLED OVER RIGID INSULATION



TYPICAL WALL ASSEMBLY
 GYPSUM BOARD
 AIR BARRIER/VAPOR RETARDER
 BATT INSULATION
 WOOD STUDS (METAL OPTIONAL)
 EXTERIOR SHEATHING
 HYDROGAP® DRAINABLE HOUSE WRAP
 RIGID FOAM INSULATION
 HOMESLICKER® RAINSCREEN
 EXTERIOR CLADDING
 (SIDING, STUCCO, OR STONE)

C TYPICAL WALL ISOMETRIC
 RESIDENTIAL WOOD FRAME STRUCTURE w/ STUCCO
 HOMESLICKER AND HYDROGAP OVER RIGID INSULATION

Cut Back Installation Method	HYDROGAP® INSTALLED WITH RIGID INSULATION			NTS
	BENJAMIN OBDYKE INCORPORATED 400 BABYLON ROAD, SUITE A HORSHAM, PA 19044 - 1213	TOLL FREE: 1-800-523-5261 PHONE: (215) 672-7200 FAX: (215) 672-5204	www.benjaminobdyke.com	JUNE 2014