

benwrap™

hydroflash®

accessories

HOUSEWRAP PROTECTION

installation instructions

800.523.5261
techsupport@obdyke.com

BENJAMIN OBDYKE
roof & wall products

HOUSEWRAP PROTECTION INSTALLATION INSTRUCTIONS

benwrap™

hydroflash®

accessories

REVIEW PRIOR TO INSTALLATION OF BENWRAP & FLASHINGS

PREINSTALLATION CONSIDERATIONS

Unroll BenWrap™ with printed side and spacers facing out and fasten to sheathing with nails, staples, or cap fasteners

Fasteners should provide a minimum of 1/2 in penetration into the nail base and be spaced approximately 12 to 18 inches apart along the horizontal and vertical laps. Fasten every 3 sq ft elsewhere

BenWrap™ should be installed shingle lap fashion (ie. begin installation at the base of the wall assembly)

Extend the housewrap a minimum 2 inches over the sill plate

Overlap all horizontal seams by at least 4 inches, all vertical seams by at least 6 inches, and all inside and outside corners by 12 inches.

Be sure that the housewrap installation and flashing provide positive drainage to the exterior of the assembly.

Do not let housewrap be exposed to sunlight in excess of 120 days prior to the installation of cladding

Flash wall penetrations (such as outlets, exhaust vents, etc.) with proper shingling technique to maintain drainage

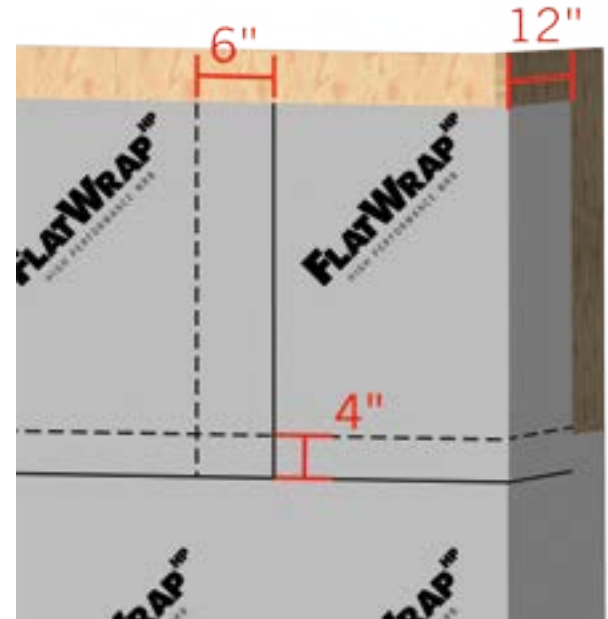
Flash windows and doors according to building code requirements. Surface should be clean and dry. All self-adhered flashing must be adhered using a hand applicator. HydroFlash® should be stored inside or in conditioned spaces prior to installing in cold temperatures.

Install windows and doors per manufacturer's installation instructions

Tape all holes and tears that may have been inadvertently introduced during the construction process

BenWrap™ can be installed in any direction and still maintain its performance characteristics

Cap fasteners are required to qualify for warranty coverage



VIRTUAL JOBSITE VISIT

Project specific installation training and window mockups are recommended to verify proper details and reduce the learning curve for installers and design professionals. Please contact us at techsupport@obdyke.com, or fill out the request form on our website,

OR SCAN THE QR CODE HERE.



HOUSEWRAP PROTECTION INSTALLATION INSTRUCTIONS

benwrap™

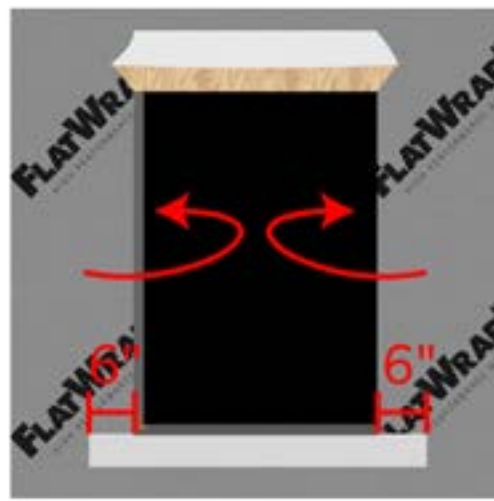
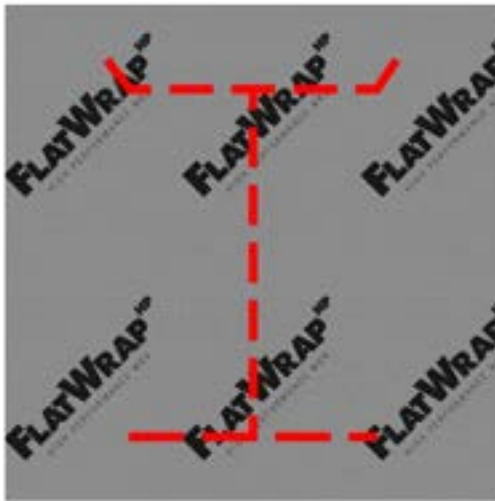
hydroflash®

accessories

HOUSEWRAP PROTECTION WINDOW ASSEMBLY

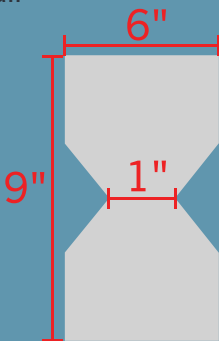
“Fold-In” Window Installation

- Wrap the entire building including the windows and door openings.
- At each opening, cut an “I”. Cut the housewrap at the head 45 degrees away from the window opening to account for flashing width.
- Fold up top trapezoid shaped “flap” and secure it temporarily with tape prior to installing the window.
- Fold side flaps into rough opening, cut and fasten.
- Install 6 inch HydroFlash flush with the window sill, and 6 inches past the rough opening on either side of the jamb. All flashing should be installed with firm pressure, using a roller or hand applicator.



WINDOW SILL DETAILS

Bow tie detail



- (optional) Install sloped sill or back dam (optimal slope .25”), except when using approved pre-manufactured sill pan.
- To properly flash the sill, cut and install corner patch flashing or use HydroCorners.
- Install HydroFlash 9” to extend at least 6 inches up the side of each jamb inside window opening.
- To use 6” HydroFlash at the sill, two pieces must be used: one piece flush with the sill edge; and the other folded into the sill.

HOUSEWRAP PROTECTION INSTALLATION INSTRUCTIONS

benwrap™

hydroflash®

accessories

HOUSEWRAP PROTECTION WINDOW ASSEMBLY

HydroCorner Detail



- To use HydroCorners instead of patches, set a HydroCorner in a bead of sealant at each corner sill and fasten with a staple. Install HydroFlash 9" to extend at least 6 inches up the inside of each jamb inside the window opening. HydroFlash has an acrylic adhesive that must be rolled in order to fully adhere to the substrate.



- Apply caulk/sealant at the jambs and head, avoiding the sill area.
- Install flanged window. And add HydroFlash over the jambs and nail fin. Surface should be clean and dry and you should always use a hand applicator or roller when applying HydroFlash products.



- Install a drip cap. Apply HydroFlash header flashing with a hand applicator. Surface should be clean and dry.
- Fold top flap down on top of flashed header and apply HydroFlash at diagonal cuts with a hand applicator.

HOUSEWRAP PROTECTION INSTALLATION INSTRUCTIONS

benwrap™

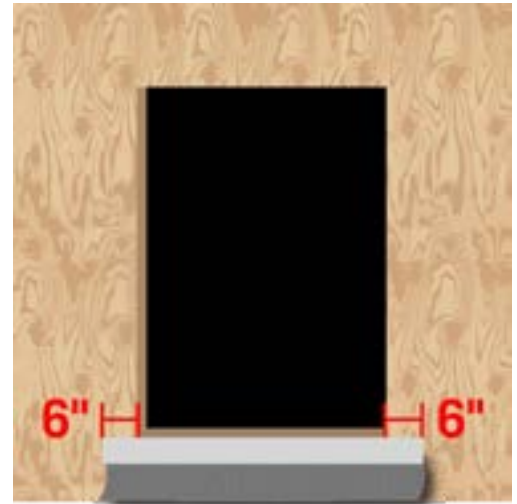
hydroflash®

accessories

HOUSEWRAP PROTECTION WINDOW ASSEMBLY

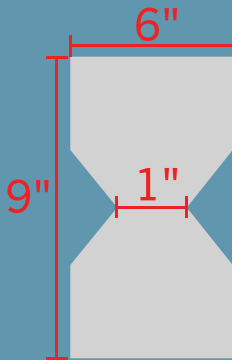
“Windows-First” Window Installation

- Secure a BenWrap “apron” at sill using a piece of HydroFlash. Apron should extend beyond each side of rough opening at least the width of the jamb flashing; not less than 6 inches. Secure apron to the wall along the top edge, but leave the bottom of the apron loose. The loose edge will overlap the layer of BenWrap installed after window installation is complete.



WINDOW SILL DETAILS

Bow tie detail



- (optional) Install sloped sill or back dam (optimal slope .25”), except when using approved pre-manufactured sill pan.
- To properly flash the sill, cut and install corner patch flashing or use HydroCorners.
- Install HydroFlash 9” to extend at least 6 inches up the side of each jamb inside window opening.
- To use 6” HydroFlash at the sill, two pieces must be used: one piece flush with the sill edge; and the other folded into the sill. All flashing should be installed using firm pressure, with either a hand applicator or roller.

HydroCorner Detail



- To use HydroCorners instead of patches, set a HydroCorner in a bead of sealant at each corner sill and fasten with a staple. Install HydroFlash 9” to extend at least 6 inches up the inside of each jamb inside the window opening. HydroFlash has an acrylic adhesive that must be rolled in order to fully adhere to the substrate.

HOUSEWRAP PROTECTION INSTALLATION INSTRUCTIONS

benwrap™

hydroflash®

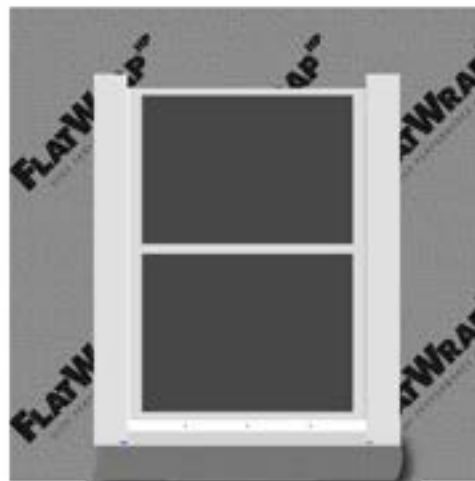
accessories

HOUSEWRAP PROTECTION WINDOW ASSEMBLY

“Windows-First” Window Installation



- Apply caulk/sealant at jambs and head. Do not caulk at the window sill.
- Install flanged window. Install HydroFlash to the side jambs with a hand applicator. Surface should be clean and dry.
- Install drip cap. Apply HydroFlash header flashing with a hand applicator. Surface should be clean and dry.



- After you've wrapped the building with BenWrap, at window locations, cut back BenWrap to expose window. Do not cut through HydroFlash or BenWrap apron.
- At 2 - 4 inches below window, cut horizontal slit in BenWrap, extending to edges of jamb flashing. Do not cut through HydroFlash or BenWrap apron. Pull apron through to lap over top layer of BenWrap, creating positive drainage.
- Tape seams with HydroFlash at window jambs. Do not tape the top or bottom of window nailing flange. All flashings must be installed using firm pressure, with either a hand applicator or roller.

HOUSEWRAP PROTECTION INSTALLATION INSTRUCTIONS

benwrap™

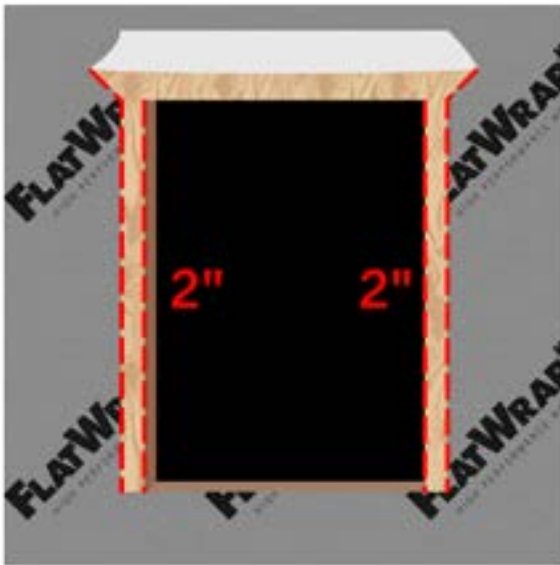
hydroflash®

accessories

HOUSEWRAP PROTECTION WINDOW ASSEMBLY

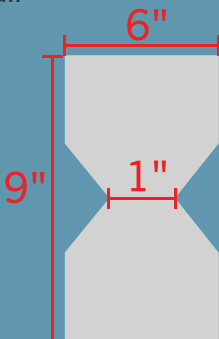
“Cut-Back” Window Installation

- Wrap the entire building including the windows and door openings.
- At each window opening, cut housewrap flush with window opening. Then, cut housewrap back 2” at each window jamb to reveal sheathing. Cut housewrap above the top corners 45° away from window opening to account for flashing width.
- Fold up top trapezoid shape “flat” and secure temporarily with tape prior to installing window.



WINDOW SILL DETAILS

Bow tie detail



- (optional) Install sloped sill or back dam (optimal slope .25”), except when using approved pre-manufactured sill pan.
- To properly flash the sill, cut and install corner patch flashing or use HydroCorners.
- Install HydroFlash 9” to extend at least 6 inches up the side of each jamb inside window opening.
- To use 6” HydroFlash at the sill, two pieces must be used: one piece flush with the sill edge; and the other folded into the sill.

HOUSEWRAP PROTECTION INSTALLATION INSTRUCTIONS

benwrap™

hydroflash®

accessories

HOUSEWRAP PROTECTION WINDOW ASSEMBLY

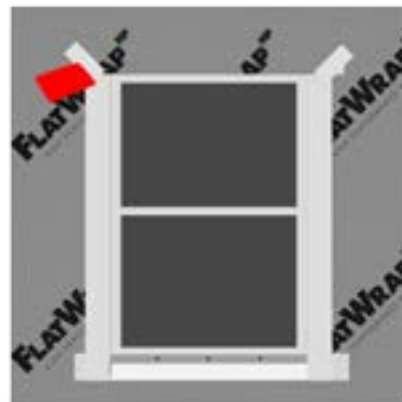
HydroCorner Detail



- To use HydroCorners instead of patches, set a HydroCorner in a bead of sealant at each corner sill and fasten with a staple. Install HydroFlash 9" to extend at least 6 inches up the inside of each jamb inside the window opening. HydroFlash has an acrylic adhesive that must be rolled in order to fully adhere to the substrate.



- Apply caulk/sealant at the jambs and head, avoiding the sill area.
- Install flanged window. And add HydroFlash over the jambs and nail fin. Surface should be clean and dry and you should always use a hand applicator or roller when applying HydroFlash products.



- Install a drip cap. Apply HydroFlash header flashing with a hand applicator. Surface should be clean and dry.
- Fold top flap down on top of flashed header and apply HydroFlash at diagonal cuts with a hand applicator.

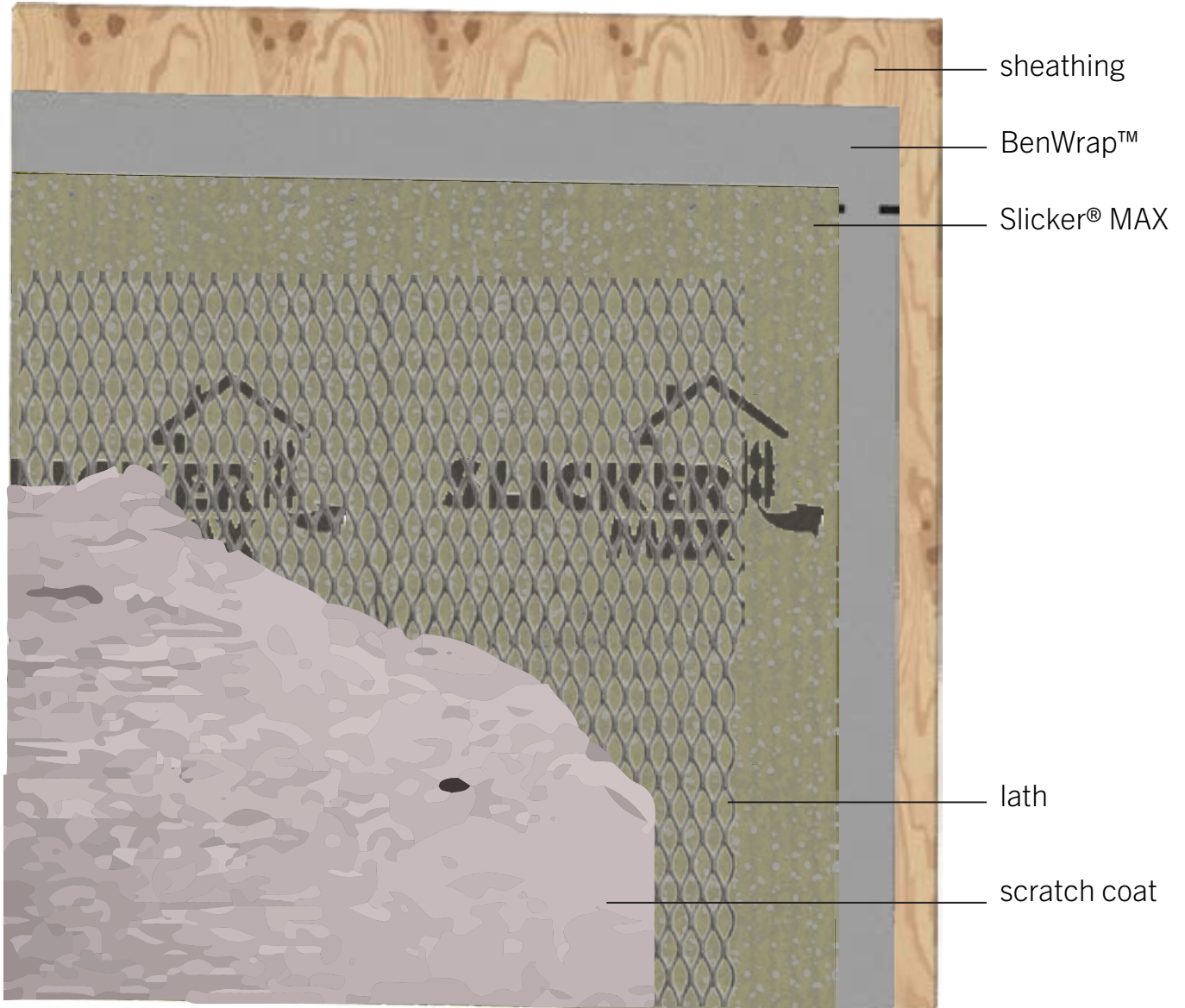
HOUSEWRAP PROTECTION INSTALLATION INSTRUCTIONS

benwrap™

hydroflash®

accessories

STONE & STUCCO APPLICATION



VIRTUAL JOBSITE VISIT

Project specific installation training and window mockups are recommended to verify proper details and reduce the learning curve for installers and design professionals. Please contact us at techsupport@obdyke.com, or fill out the request form on our website,

OR SCAN THE QR CODE HERE.



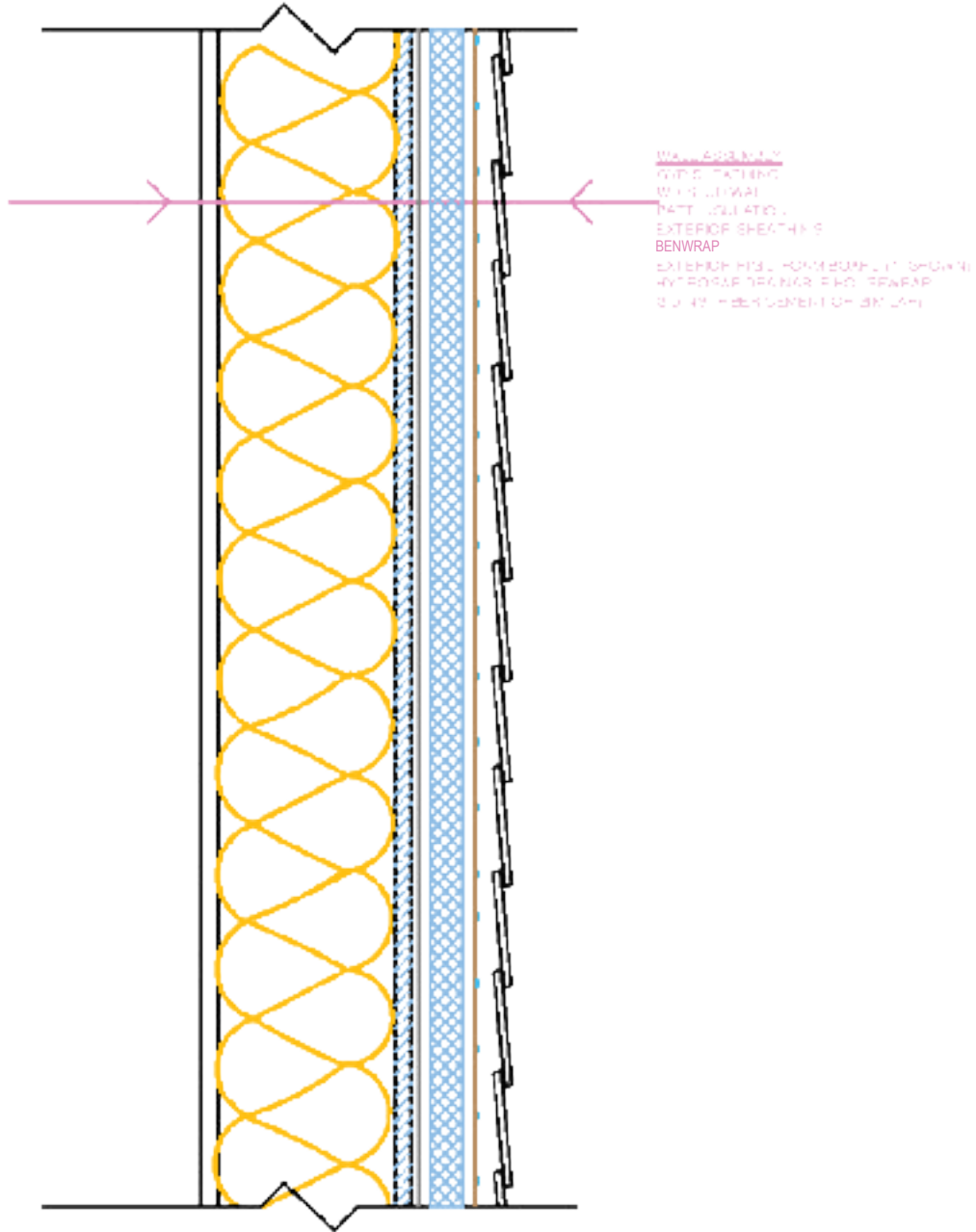
HOUSEWRAP PROTECTION INSTALLATION INSTRUCTIONS

benwrap™

hydroflash®

accessories

RIGID FOAM APPLICATION



OPTION 1: BENWRAP , RIGID FOAM AND HYDROGAP