

# BENWRAP™

HIGH PERFORMANCE WRB



HORIZONTAL SEAMS: MIN. 4 INCH OVERLAP  
VERTICAL SEAMS: MIN. 6 INCH OVERLAP  
CORNERS: MIN. 12 INCH OVERLAP

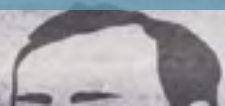


HORIZONTAL SEAMS: MIN. 4 INCH OVERLAP  
VERTICAL SEAMS: MIN. 6 INCH OVERLAP  
CORNERS: MIN. 12 INCH OVERLAP



**BENJAMIN  
OBDYK**  
roof & wall products  
(800) 523-5232

BenWrap™ is a high-performance water-resistive barrier (housewrap). When used in conjunction with a rainscreen wall, it provides superior bulk water drainage, exceptional vapor permeability and durability. BenWrap™ is a perfect complement to Slicker® products as the WRB component in a rainscreen wall system. It can also be paired with HydroGap® Drainable housewrap as the required secondary layer in stone or stucco applications.



# BENWRAP

HIGH PERFORMANCE WRB

**BENJAMIN  
OBDYKE**

roof & wall products

31

CORNERS: MIN.

VERTICAL SEAMS: MIN. 6  
CORNERS: MIN. 12 INCH

## WIDTHS

3 ft, 5 ft, & 9 ft

## LENGTH PER ROLL

100 ft (30.48 m)

## MAX. UV EXPOSURE

120 days

## VAPOR PERMEABILITY

16 perms

**Premium tri-laminate housewrap** provides optimal strength while protecting the water resistant film layer

**Available in 3, 5, and 9 foot rolls** for easy single person installation

**Resists damage** from surfactants that can compromise other brands of housewrap

**Ideal water resistant barrier** to be used in combination with Slicker Rainscreen products

**Greater tear and wind load** resistance for jobs over 40 feet

ADDITIONAL SEAMS: MIN. 9 INCH  
VERTICAL SEAMS: MIN. 6 INCH  
CORNERS: MIN. 12 INCH OVER