

SLICKER® MAX RAINSCREEN

	Page
List of Approved Compatible Products	2
Nail Selection Guide	3
General Installation	4
Top of Wall Detail	5
Bottom of Wall Detail	6
Wall Corner Detail	7
Insulation Board Installation	8
Flanged Window with WRB Installed Before Window	9
Flanged Window with WRB Installed After Window	10
Non-Flanged Window with WRB Installed Before Window	11
Non-Flanged Window with WRB Installed After Window	12
Transition Detail from HydroGap to Slicker MAX	13



Approved Compatible Products

CLADDING

Fiber Cement
Wood (including Shingles & Shakes)
Vinyl and Insulated Vinyl
Manufactured Stone
Stucco
Metal

FASTENERS

Staples

Note: Slicker MAX is compatible with all water resistive barriers. We recommend a premium, tri-laminate, non-woven housewrap such as FlatWrap UV. Regardless of which WRB you choose, follow manufacturer's instructions for compatible accessories.

In order to achieve a system warranty, the following components must also be used in conjunction with Slicker MAX:

HydroFlash® Self-Adhered Flashing
FlatWrap® UV Enhanced UV Commercial Grade
WRB (attached with cap fasteners)

Optional:

HydroCorner® Sill Treatment
HydroFlash® 2.5 in Seam Tape

Nail Selection Guide

Wood Siding

All nails are required to meet the following conditions:

- Siding or box nail
- Blunt-tipped to reduce splitting
- Ring or spiral-threaded shanks to provide increased holding power
- Stainless steel, hot-dipped galvanized, or aluminum for corrosion resistance
- Minimum 1 1/4 in penetration into studs

Note: To prevent bleeding and corrosive staining, use only stainless steel nails in the following situations: no stain on siding, clear or semi-transparent stain on siding, or an application that is subject to seacoast exposure.

Pneumatic nail guns can be used if collated nails meet prior recommendations and the air pressure and depth gauge is set so that nail is driven snug with the surface. **DO NOT OVERDRIVE NAILS**

For further information, consult the Western Red Cedar Lumber Association (WRCLA) or the Western Wood Products Association (WWPA).

Wood Shingles / Shakes

All nails are required to meet the following conditions:

- Siding or box nail
- Blunt-tipped to reduce splitting
- Ring or spiral-threaded shanks to provide increased holding power
- Hot-dipped, zinc-coated, stainless steel, or aluminum for corrosion resistance
- Penetrate into sheathing 1/2 in to 3/4 in

Note: To prevent bleeding and corrosive staining, use only stainless steel nails in the following situations: no stain on shingles / shakes, clear or semi-transparent stain on shingles / shakes, or an application that is subject to seacoast exposure.

Pneumatic nail guns can be used if collated nails meet prior recommendations and the air pressure and depth gauge is set so that nail is driven snug with the surface. **DO NOT OVERDRIVE NAILS**

For further information, consult the Cedar Shake and Shingle Bureau (CSSB).

Fiber-Cement Plank & Panel

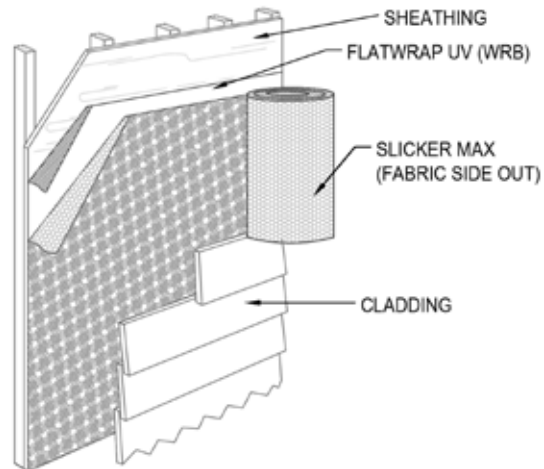
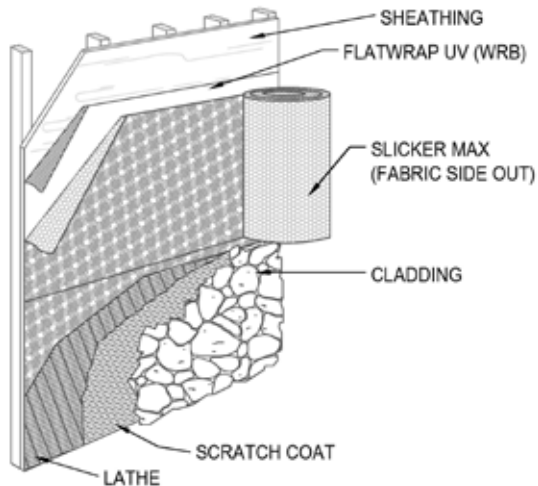
All nails are required to meet the following conditions:

- Siding or box nail
- Hot-dipped galvanized or stainless steel for corrosion resistance
- Minimum 1 1/4 in penetration into studs

Note: The use of a siding or roofing nail may not be applicable to all installations where greater windloads or wind resistance is required by the local building code. Defer to the applicable Building Code Compliance Report or fiber-cement siding manufacturer for more information.

Pneumatic nail guns can be used if collated nails meet prior recommendations and the air pressure and depth gauge is set so that nail is driven snug with the surface. **DO NOT OVERDRIVE NAILS**

General Installation



Step 1:

Install sidewall sheathing material over studs. Apply a water resistive barrier (e.g. FlatWrap UV) over wall sheathing*.

Step 2:

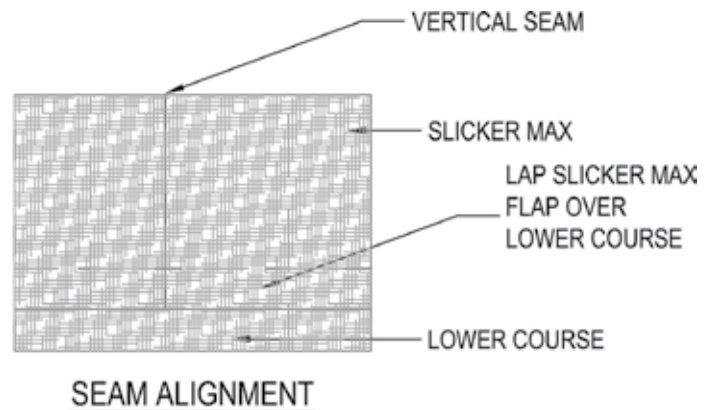
Install Slicker MAX after windows are properly installed and flashed. Refer to window installation for details on flashing integration. Start at the base of the wall and roll out Slicker MAX from left to right with the flap down and the fabric side against the cladding. On the bottom course only, fold the flap around the matrix and tuck it against the WRB (e.g. FlatWrap UV) to prevent insects from entering the channels. Nail or staple (min. 1/2 in staple) every 3 square feet*.

Step 3:

Unroll the next course in the same manner as the previous course. Butt the edges of new rolls or courses of Slicker MAX together without overlapping. Pull the flap over the previous course (shingle style) and staple.

Step 4:

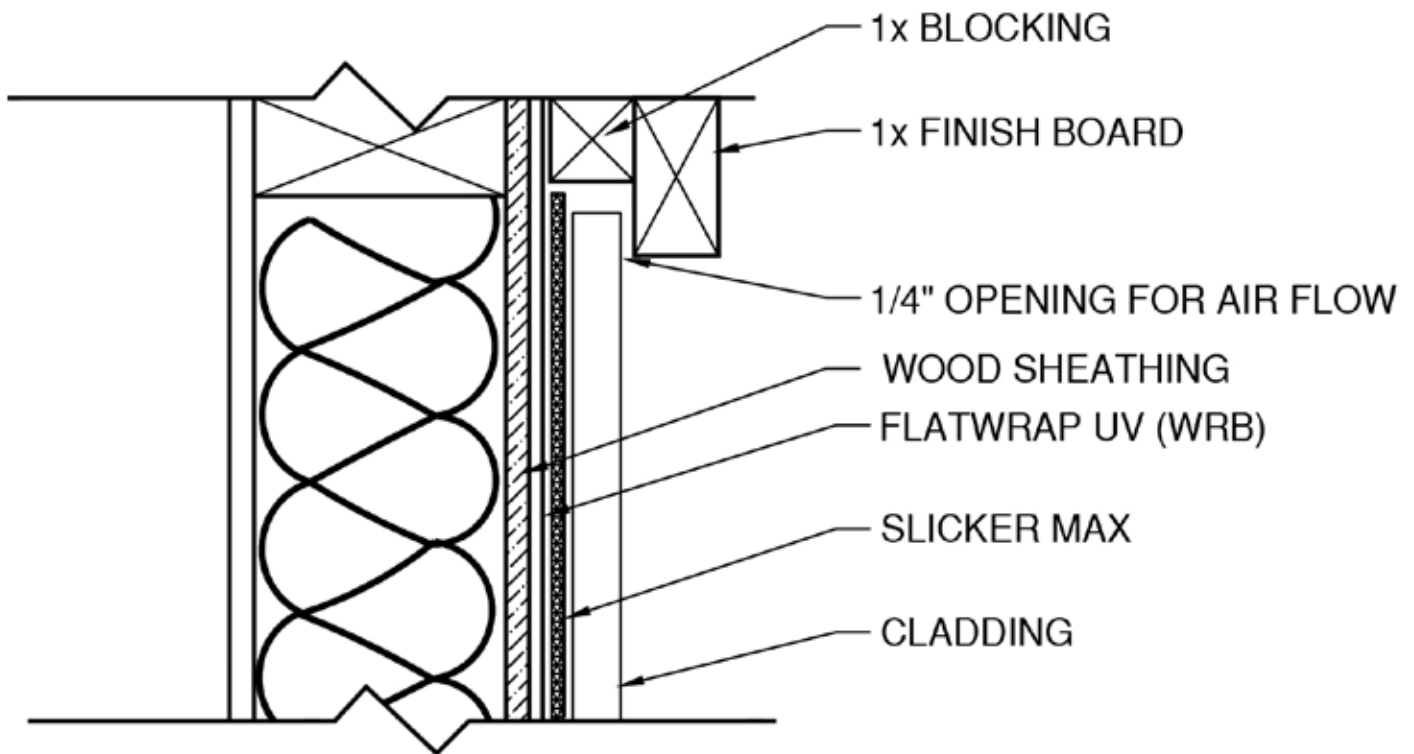
Apply lathe and cladding over Slicker MAX per manufacturer's installation instructions. Allow for thickness of Slicker MAX in fastener selection*.



*General Notes:

1. Some regions may require two layers of WRB (e.g. FlatWrap UV) for stone or stucco applications. Refer to local codes for more information.
2. All fasteners must be approved corrosion-resistant fasteners (stainless-steel, hot-dipped zinc-coated, aluminum, etc.). Refer to local codes for more information.
3. Lathe fasteners must provide sufficient penetration into wood framing (min. 1 in), metal framing/panels (min. 3/8 in), or masonry walls/panels. Refer to manufacturer's installation instructions.

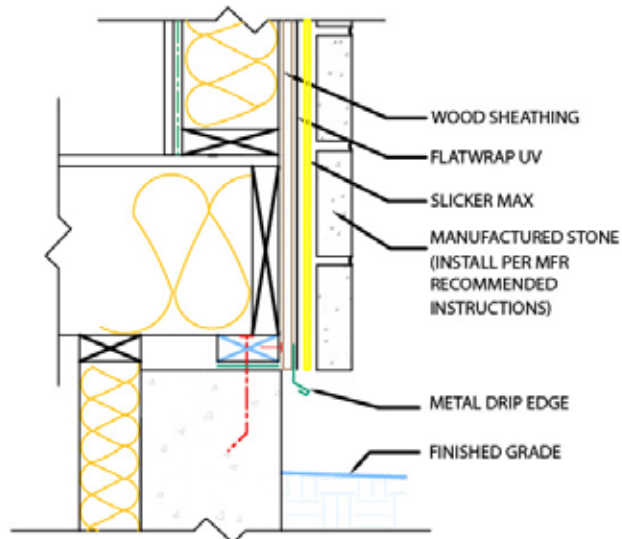
Top of Wall Detail



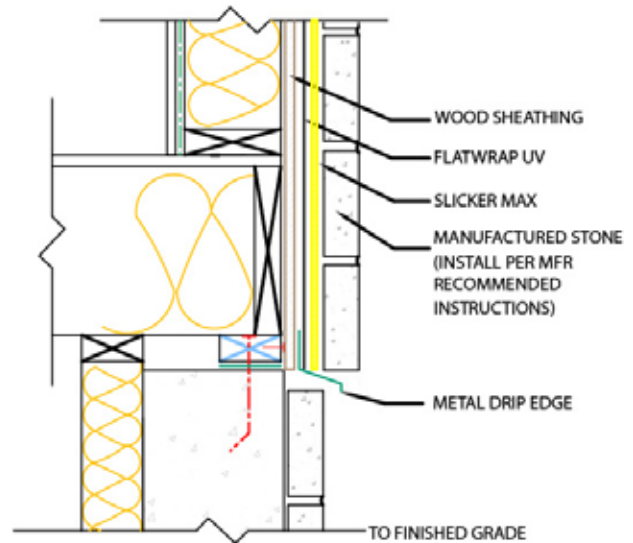
Run Slicker MAX to within 3 in of soffit overhang, install 1 in x 3 in board (as detailed in drawing) in space between top of Slicker MAX and bottom of soffit. Install cladding to within 4" of soffit overhang. Install a 1 in x 6 in finish trim board over the 1 in x 3 in board. This will allow for air movement, which will provide convective drying and ventilation behind the cladding.

Note: Leave a minimum of 1/4 in gap at top opening for Slicker MAX or 10 mm for Slicker 10 MAX. Top detail not required. Recommended to maximize airflow, but not a requirement.

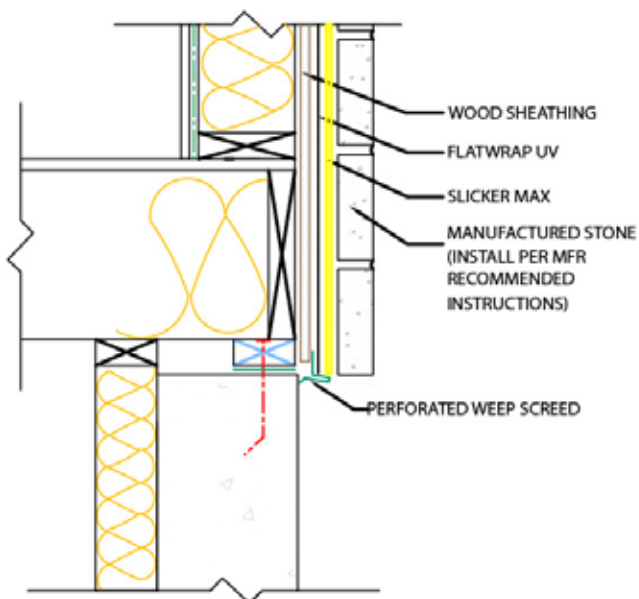
Bottom of Wall Detail



A BASE OF WALL DETAIL
RESIDENTIAL WOOD FRAME STRUCTURE
SCALE: 1/2"

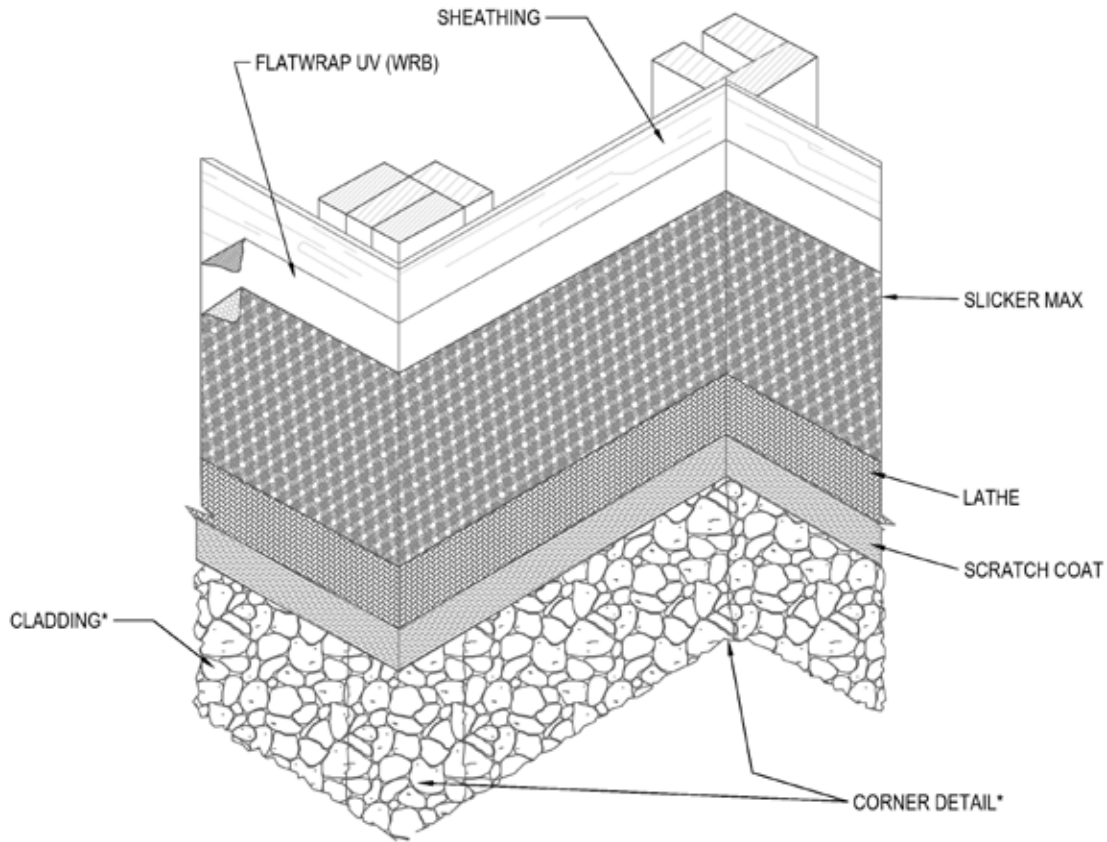


C BASE OF WALL DETAIL - CMU BLOCK
ABOVE GRADE - STONE CONTINUOUS
RESIDENTIAL WOOD FRAME STRUCTURE
SCALE: 1/2"



B BASE OF WALL DETAIL - WEEP SCREED
RESIDENTIAL WOOD FRAME STRUCTURE
SCALE: 1/2"

Wall Corner Detail



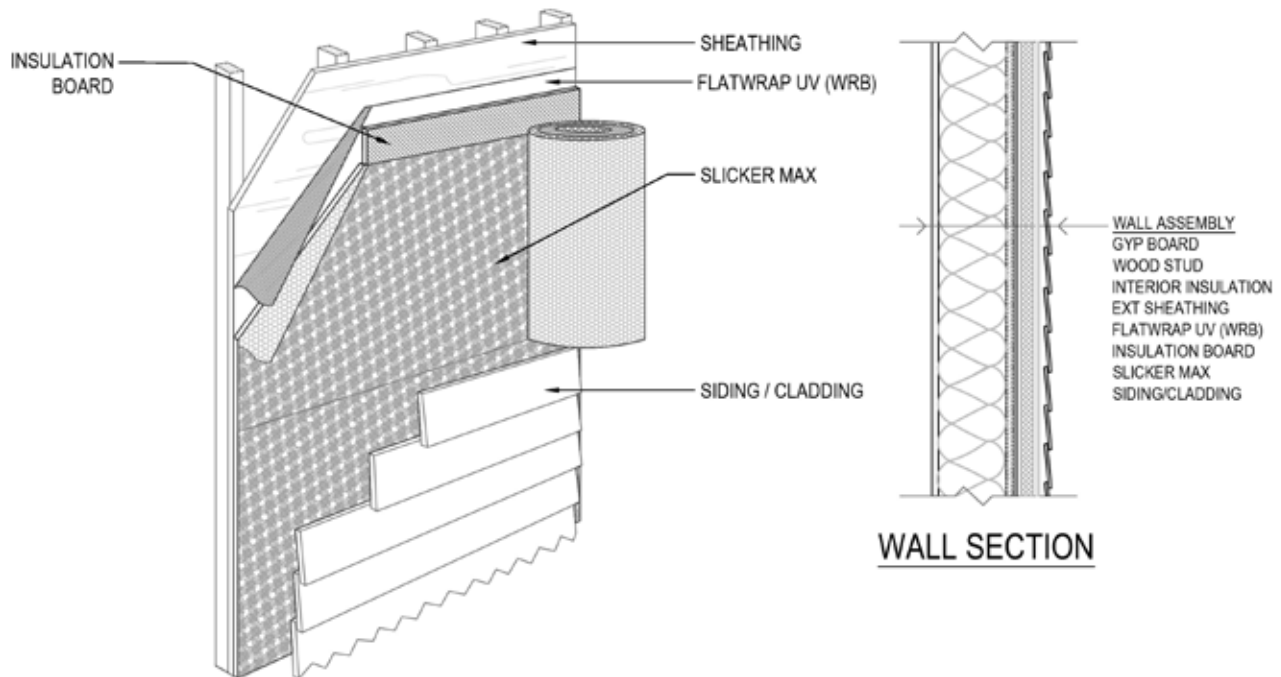
*Apply Slicker MAX around inside and outside corners when installing with manufactured stone and stucco corner materials.

Alternatively, Slicker MAX may also be installed with corner trim boards. With this installation, either apply trim boards directly to the outside and inside corners, accounting for Slicker MAX's thickness of 1/4 in, or apply Slicker MAX around the outside and inside corners and apply trim boards directly on top of Slicker MAX.

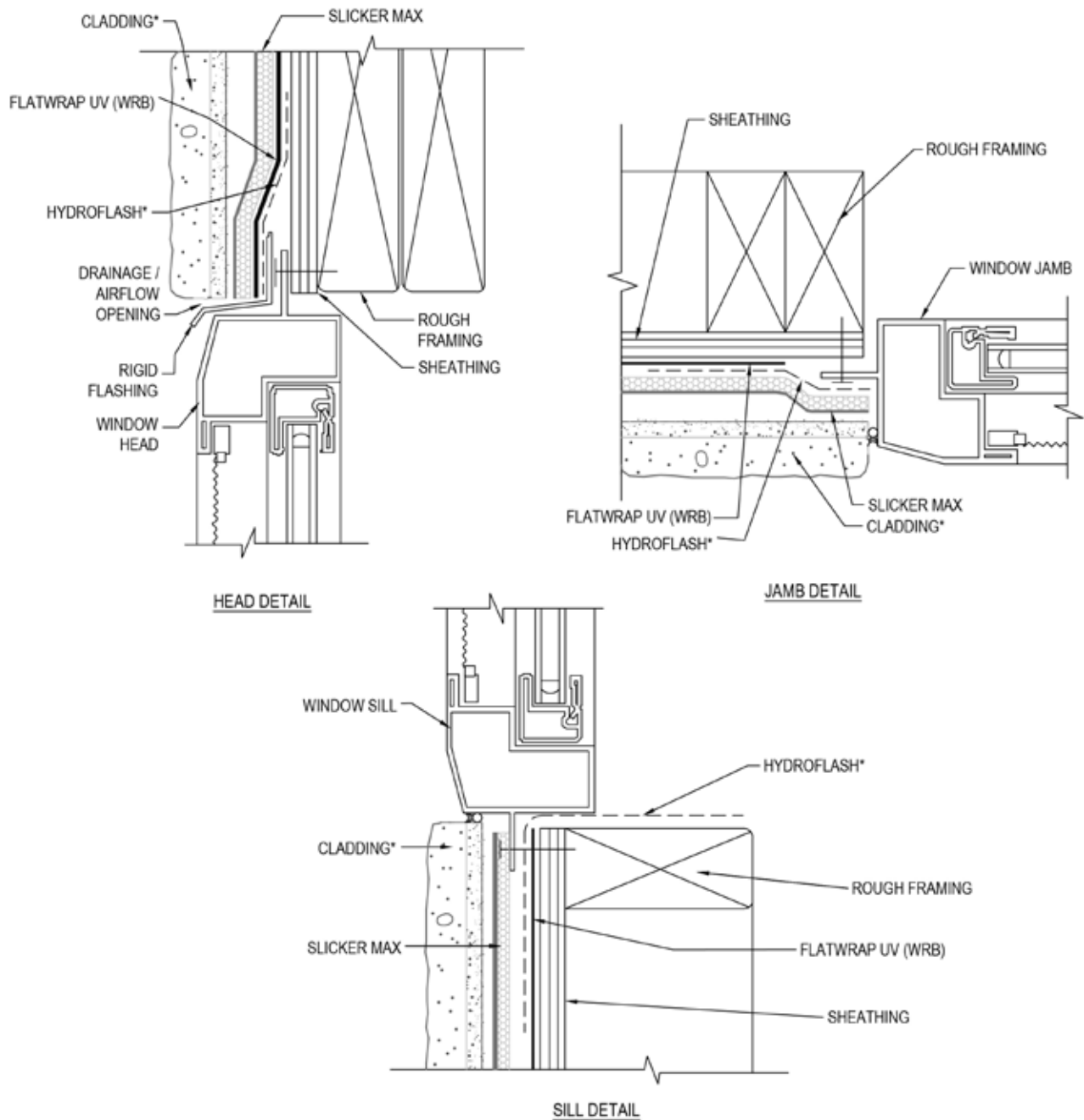
Notes:

1. Installation of cladding to be completed in accordance with manufacturer's specifications.
2. Prior to the Slicker MAX installation, install sidewall sheathing material over wall studs and apply FlatWrap UV housewrap (WRB) per manufacturer's instructions; some regions may require two layers of WRB for stone or stucco applications. Refer to local codes for more information.

Insulation Board Installation

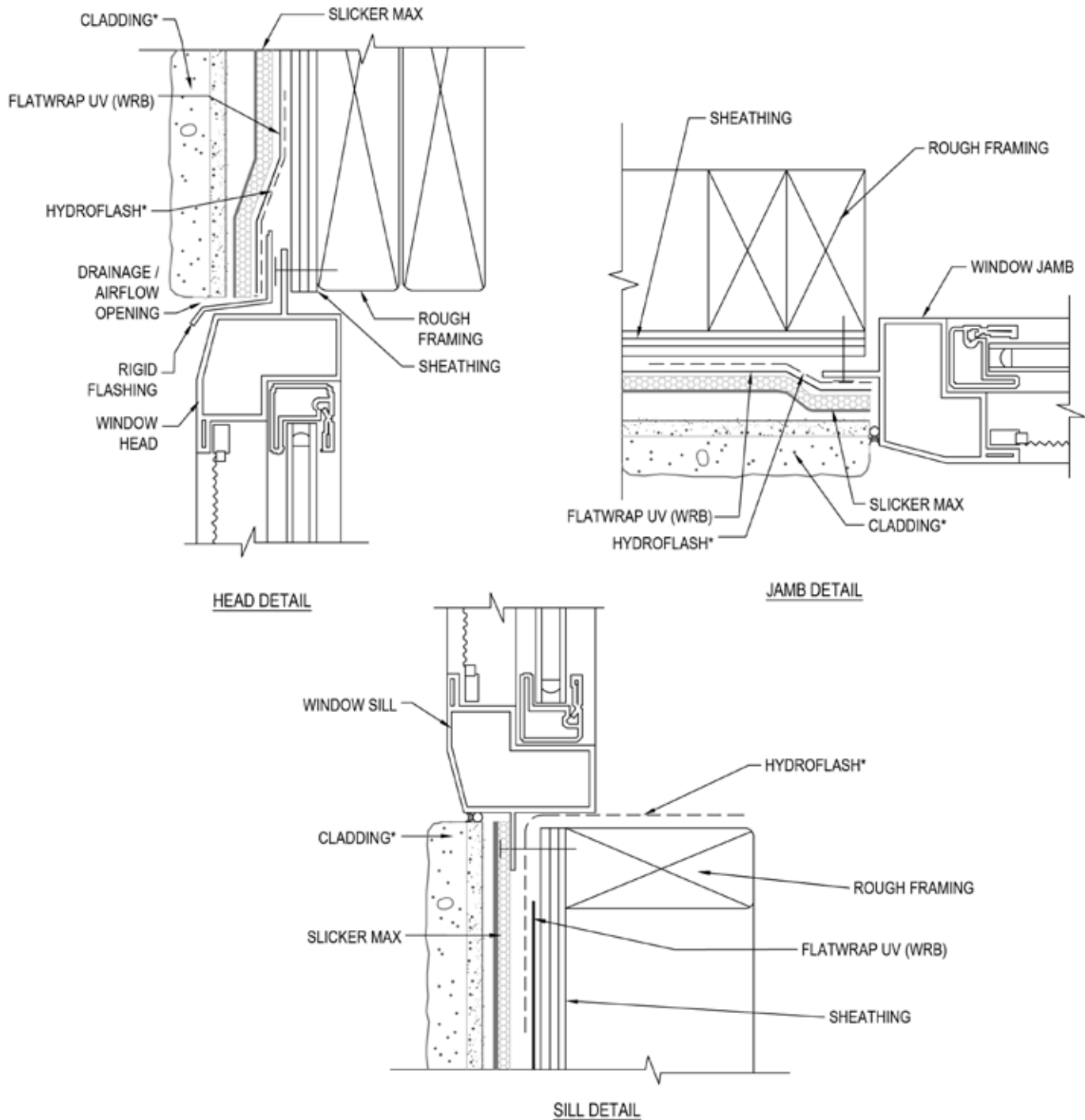


Window Detail: Flanged Window with WRB Installed Before the Window



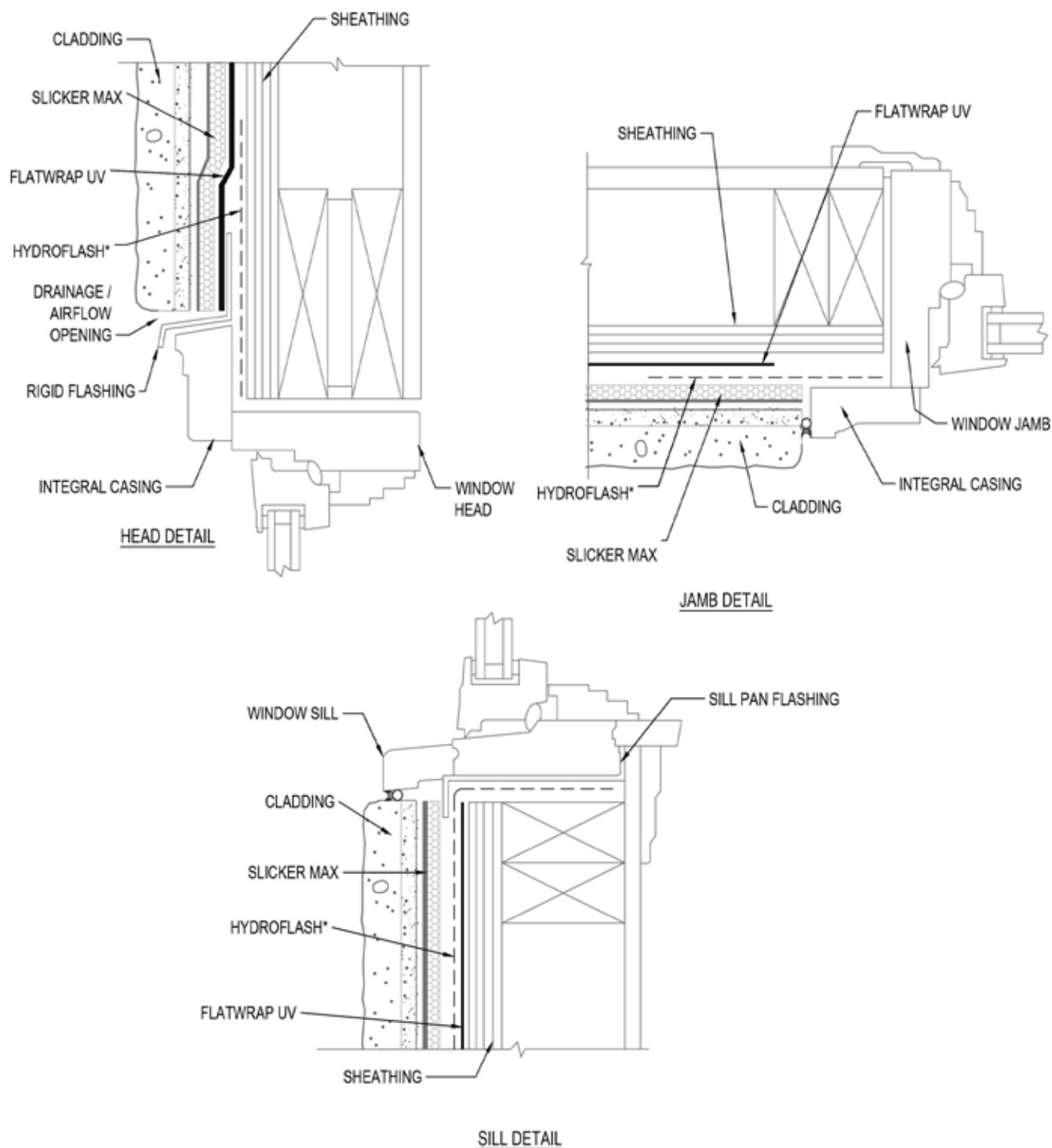
*For approved compatible products see page 2

Window Detail: Flanged Window with WRB Installed After the Window



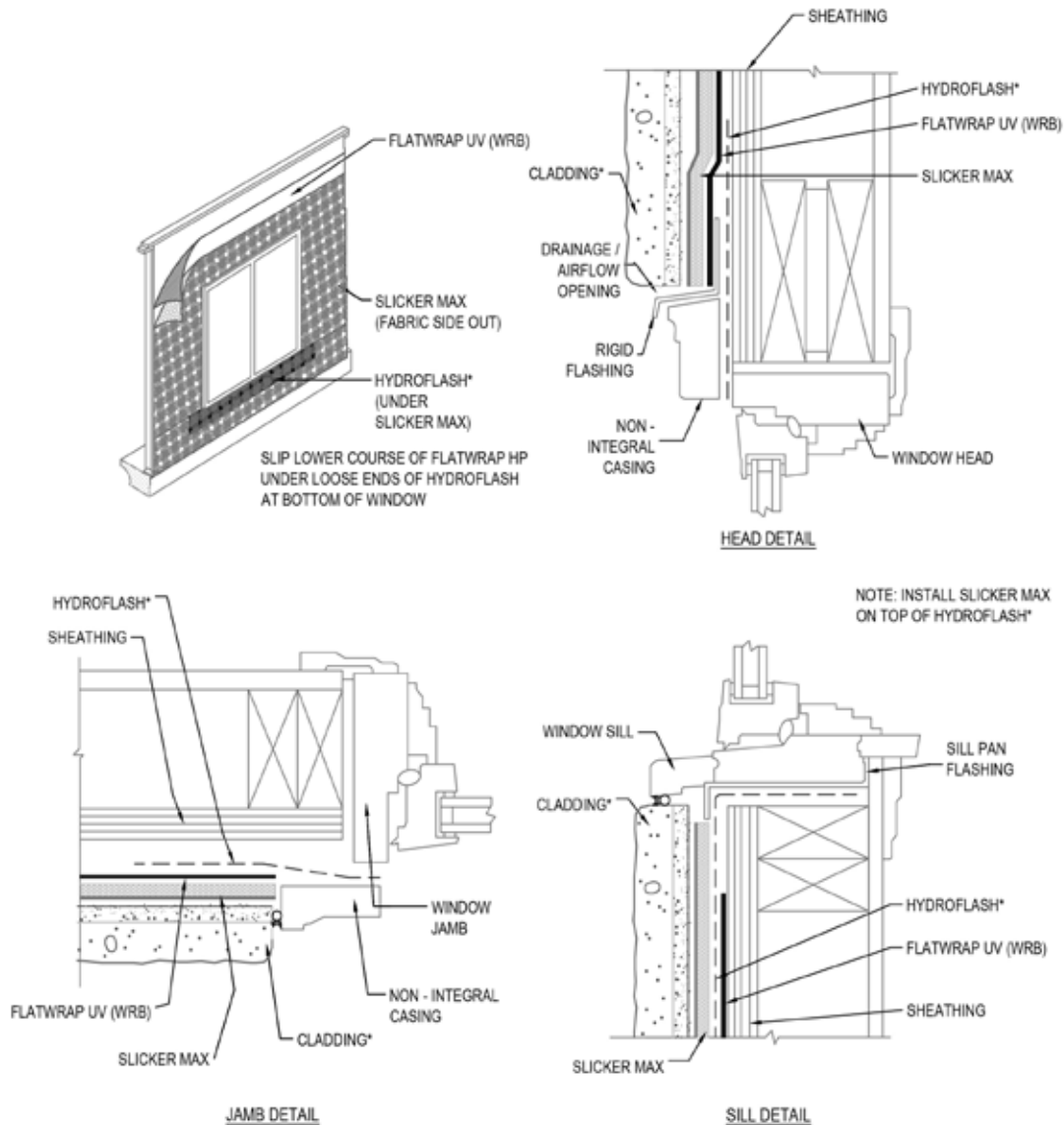
*For approved compatible products see page 2

Window Detail: Non-Flanged Window with WRB Installed Before the Window



*For approved compatible products see page 2

Window Detail: Non-Flanged Window with WRB Installed After the Window



*For approved compatible products see page 2

Transition Detail from HydroGap to Slicker MAX

