

FLATWRAP® HP HOUSEWRAP

FLATWRAP^{HP}
COMMERCIAL-GRADE WRB

Pre-Installation Considerations

- Flash wall penetrations (such as outlets, exhaust vents, etc.) with proper shingling technique to maintain drainage to the exterior.
- Flash windows and doors according to building code requirements. Surface should be clean and dry. All self-adhered flashing must be adhered using a hand applicator. HydroFlash GP should be stored inside or in conditioned space prior to installing in cold temperatures.
- Install windows and doors per manufacturer's installation instructions.
- Tape all tears and holes that may have been inadvertently introduced during the construction process.
- FlatWrap HP can be installed in any direction and still maintain its performance characteristics.
- When installing FlatWrap HP as the primary air barrier, consider the following:
 - Tape all seams with HydroFlash GP 2.5 in. Surface must be clean and dry and tape must be adhered using a hand applicator.
 - Seal the bottom of the first course to the foundation or sill plate using approved sealant.
 - Tape/seal all penetrations and tears. Surface must be clean and dry and tape must be adhered using a hand applicator.
 - Use cap fasteners.
- For commercial installation above 40 feet, increase nailing pattern at horizontal and vertical overlaps to every 18 inches. Cap fasteners are also recommended for installation above 40 feet.
- To achieve 10 YEAR PRODUCT AND LABOR LIMITED WARRANTY:
 - **Install with Benjamin Obdyke wall system accessories**
 - Cap fasteners must be used (any brand)
 - HydroFlash GP must be used as the self-adhered flashing for windows, doors, and other penetrations
 - HydroCorner can be used in conjunction with HydroFlash GP to treat the sills
 - Taping seams of housewrap is optional, but HydroFlash GP (2.5" or wider) must be used if seams are taped

Approved Compatible Products

FASTENERS

Staples
Cap Fasteners*

SEAM TAPE

Benjamin Obdyke HydroFlash GP 2.5 in. Sealing Tape^

SELF-ADHERED FLASHING

Benjamin Obdyke HydroFlash® GP
ZIP System™ Flashing Tape
SIGA Wigluv
SIGA Fentrim F
3M™ All Weather Flashing Tape 8067
DuPont™ FlexWrap™ NF
Protecto Wrap Super Stick
Nichigo G-Tape™ 3040BK

BATTENS/FURRING

Benjamin Obdyke Batten UV
Wood furring strips

CAULKS & SEALANTS

OSI® QUAD® MAX Sealant
Loctite® Premium® Construction Adhesive
Loctite® PL Premium® S40 Polyurethane
GeoCell® 2300 Construction Tripolymer
SBC® Pro Flex®
Bostik® 915™ Polyurethane Sealant
Bostik® 915FS™ Polyurethane Sealant
Dow Corning® 732 Multi-purpose Sealant
NPC® Solar Seal #900
Titebond® WeatherMaster™
Titebond® WeatherMaster™ ULTIMATE MP
Tremco® Vulkem® 116
DAP® Flexible CLEAR Sealant

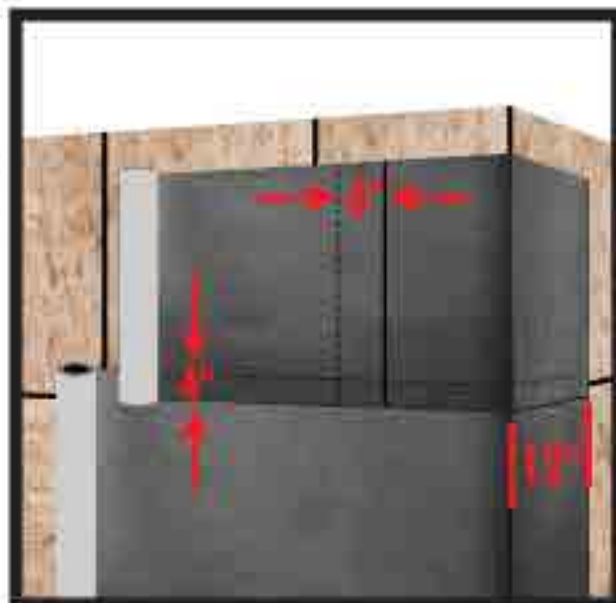
*required components to achieve 10 YEAR PRODUCT
AND LABOR LIMITED WARRANTY

^optional components to achieve 10 YEAR PRODUCT
AND LABOR LIMITED WARRANTY

Basic Installation & Window Flashing: "Cut-Back" Method

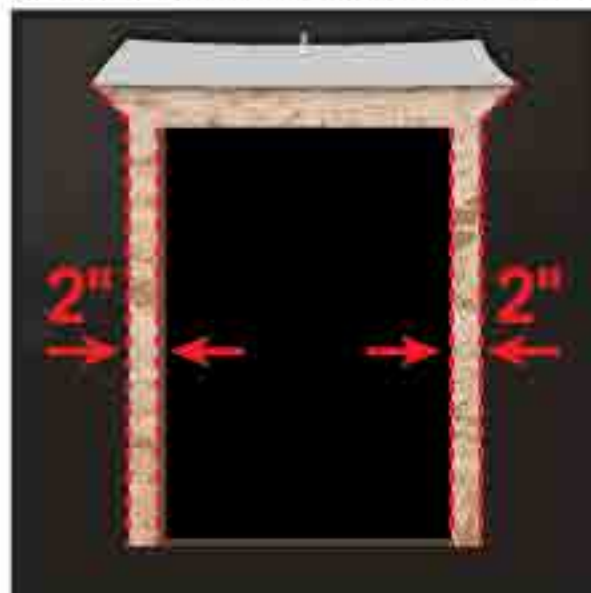
Step 1

- Unroll FlatWrap HP with black side facing out and fasten to sheathing with nails, staples or cap fasteners.
- Fasteners should provide a minimum of 1/2 inch penetration into the nail base and be spaced approximately 12 to 18 inches apart along the horizontal and vertical laps. Fasten every 3 sq ft elsewhere. *For commercial installation above 40 feet, cap fasteners are recommended.
- FlatWrap HP should be installed shingle lap fashion (i.e. begin installation at the base of the wall assembly).
- Extend the housewrap a minimum 2 inches over sill plate.
- Overlap all horizontal seams by at least 4 inches, all vertical seams by at least 6 inches and corners by 12 inches.
- Be sure that the housewrap installation and flashing provide for positive drainage to the exterior of the assembly.
- Do not allow the housewrap to be exposed to sunlight in excess of 180 days prior to the installation of cladding.
- Taping of seams is NOT REQUIRED. Optionally, tape all FlatWrap HP seams with HydroFlash GP 2.5 inch. Surface must be clean and dry, and tape must be adhered using a hand applicator.



Step 2

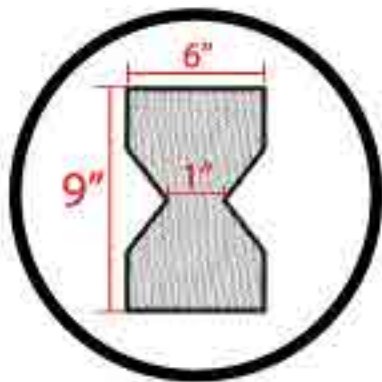
- Wrap the entire building including window and door openings.
- At each opening, cut housewrap flush with window opening. Then, cut housewrap back 2" at each window jamb to reveal sheathing. Cut housewrap at the head 45 degrees away from window opening.
- Fold up top trapezoid shaped "flap" and secure it temporarily with tape prior to installing window.



Basic Installation & Window Flashing: "Cut-Back" Method

Step 3

- (Optional) Install sloped sill or back dam (optimal slope 1/4"), except when using approved pre-manufactured sill pan.
- 9 inch wide HydroFlash GP is recommended sill installation as pictured in illustrations. If using 6 inch wide HydroFlash GP, you must use two pieces of HydroFlash GP at the sill: one piece flush with edge of sill, one piece folded into sill. 4 inch wide flashing is not recommended for sill treatment.
- To properly flash the sill, cut and install corner patch flashing or use HydroCorners.
- Install pre-cut HydroFlash GP over corner patches. Install HydroFlash GP to extend at least 6" up the side of each jamb inside window opening.



- To use HydroCorners instead of corner patches, place a HydroCorner in each sill and fasten in place with a staple. Install pre-cut HydroFlash GP over corner patches. Install HydroFlash GP to extend at least 6" up the side of each jamb inside window opening.



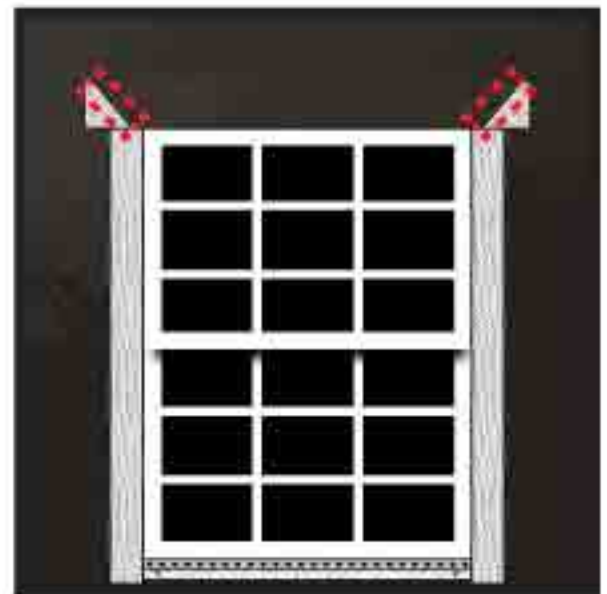
Basic Installation & Window Flashing: "Cut-Back" Method

Step 3 (continued)

- Apply caulk/sealant at jambs and head.
- Install flanged window.
- Install HydroFlash GP to the side jambs. Surface should be clean and dry and self-adhered flashing should be applied using a hand applicator.



- Install drip cap. Install HydroFlash GP header flashing. Surface should be clean and dry and self-adhered flashing should be adhered with a hand applicator.
- Fold top flap down on top of flashed header and apply HydroFlash GP at diagonal cuts.



Basic Installation & Window Flashing: "Fold-In" Method

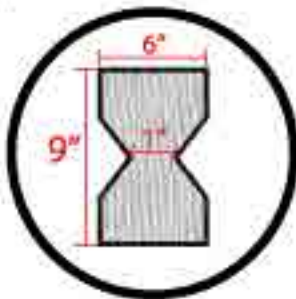
Step 1

- Wrap the entire building including window and door openings.
- At each window opening, cut an "I" shape into the housewrap. Cut housewrap above the top corners 45 degrees away from window opening to account for flashing width.
- Fold side flaps into rough opening and cut/fasten.
- Fold up top trapezoid shape "flap" and secure temporarily with tape prior to installing window.



Step 2

- (Optional) Install sloped sill or back dam (optimal slope 1/4"), except when using approved pre-manufactured sill pan.
- To properly flash the sill, cut and install corner patch flashing or use HydroCorners.
- Install pre-cut HydroFlash GP over corner patches. Install HydroFlash GP to extend at least 6" up the side of each jamb inside the window opening.



HydroCorners

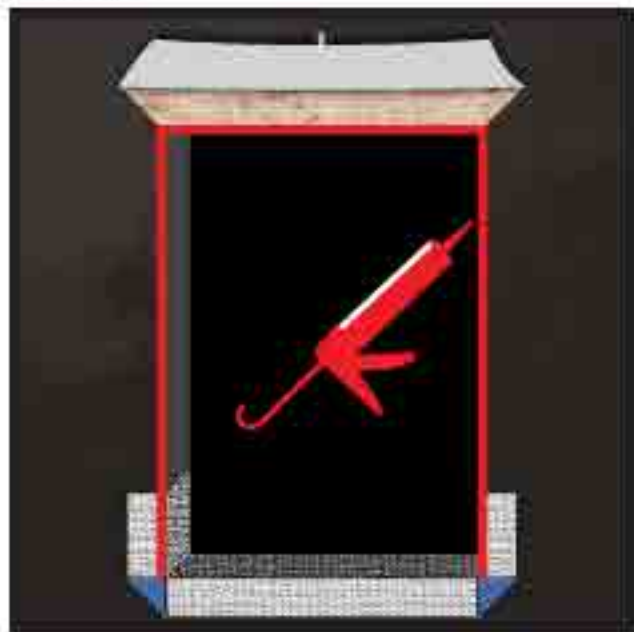
- To use HydroCorners instead of corner patches, place a HydroCorner in each sill corner and fasten in place with a staple. Install pre-cut HydroFlash GP over corner patches. Install HydroFlash GP to extend at least 6" up the side of each jamb inside the window opening.



Basic Installation & Window Flashing: "Fold-In" Method

Step 3 (continued)

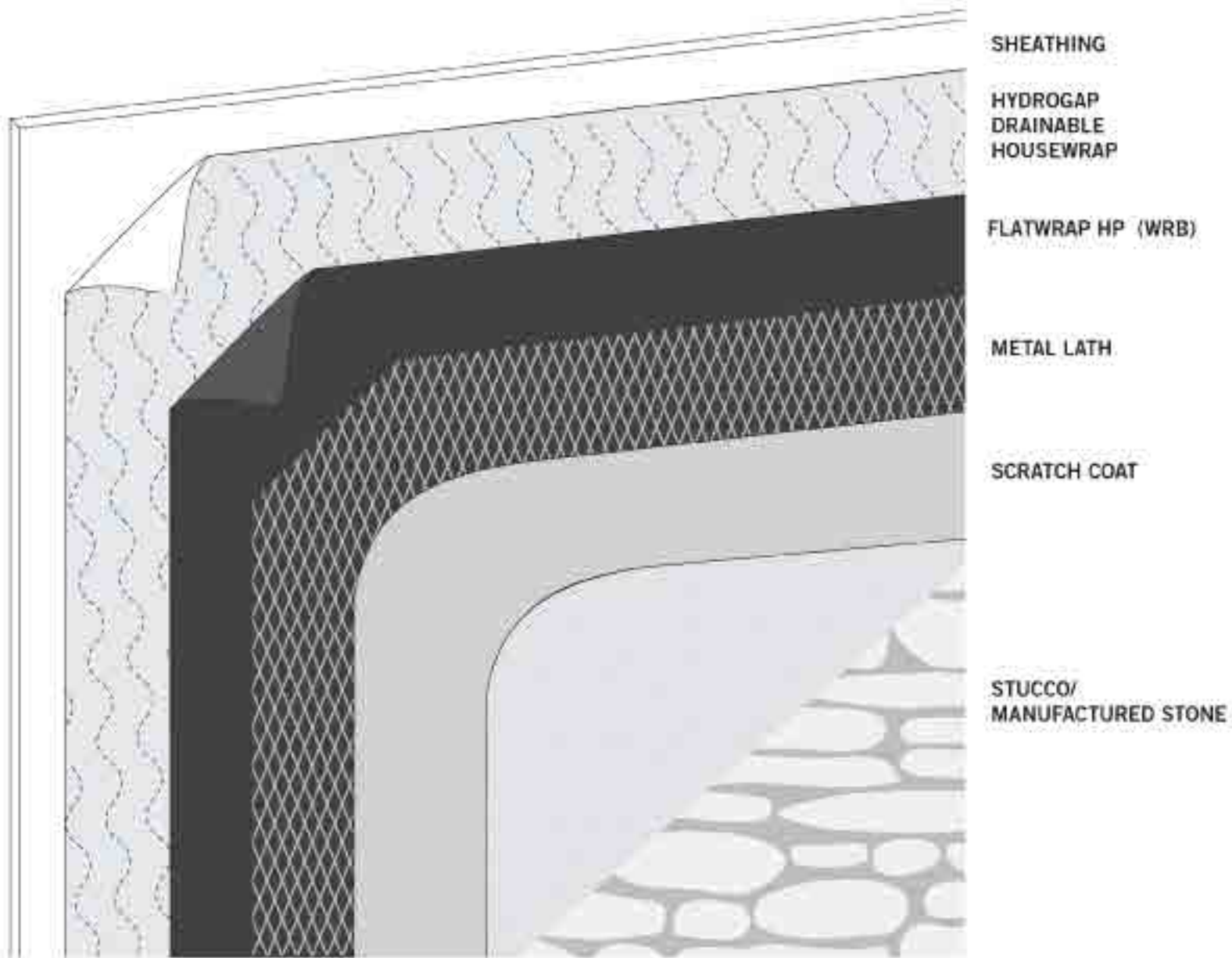
- Apply caulk/sealant at jambs and head.
- Install flanged window.
- Install HydroFlash GP to the side jambs. Surface should be clean and dry and self-adhered flashing should be applied using a hand applicator.



- Install drip cap. Install HydroFlash GP header flashing. Surface should be clean and dry and self-adhered flashing should be adhered with a hand applicator.
- Fold top flap down on top of flashed header and apply HydroFlash GP at diagonal cuts.



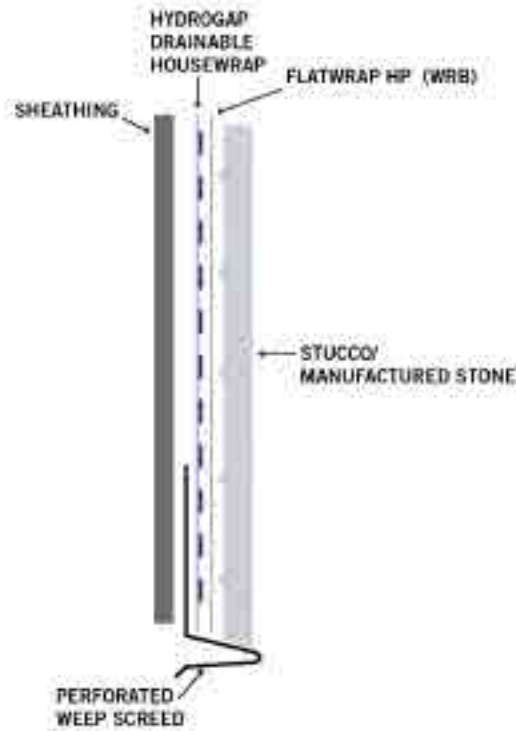
Stone & Stucco Application: Stucco & Stone Assembly



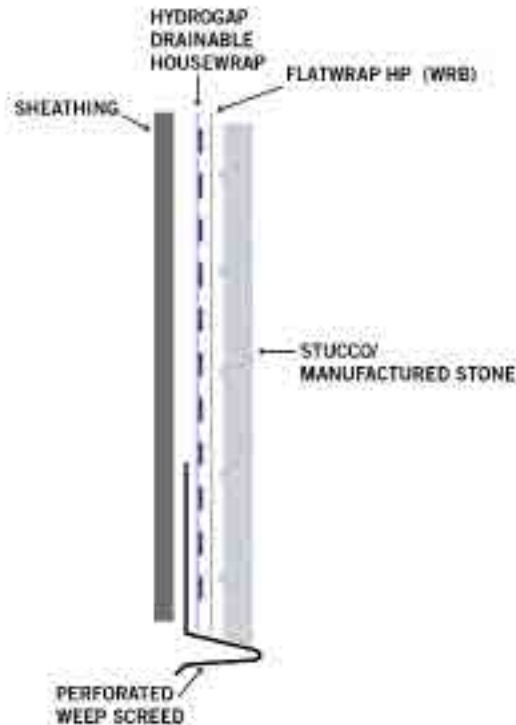
Integrate HydroGap with all sidewall flashing materials.

The second layer of water-resistant barrier (WRB) serves as an intervening layer, or "bond break", with the scratch coat to help maintain the drainage gap.

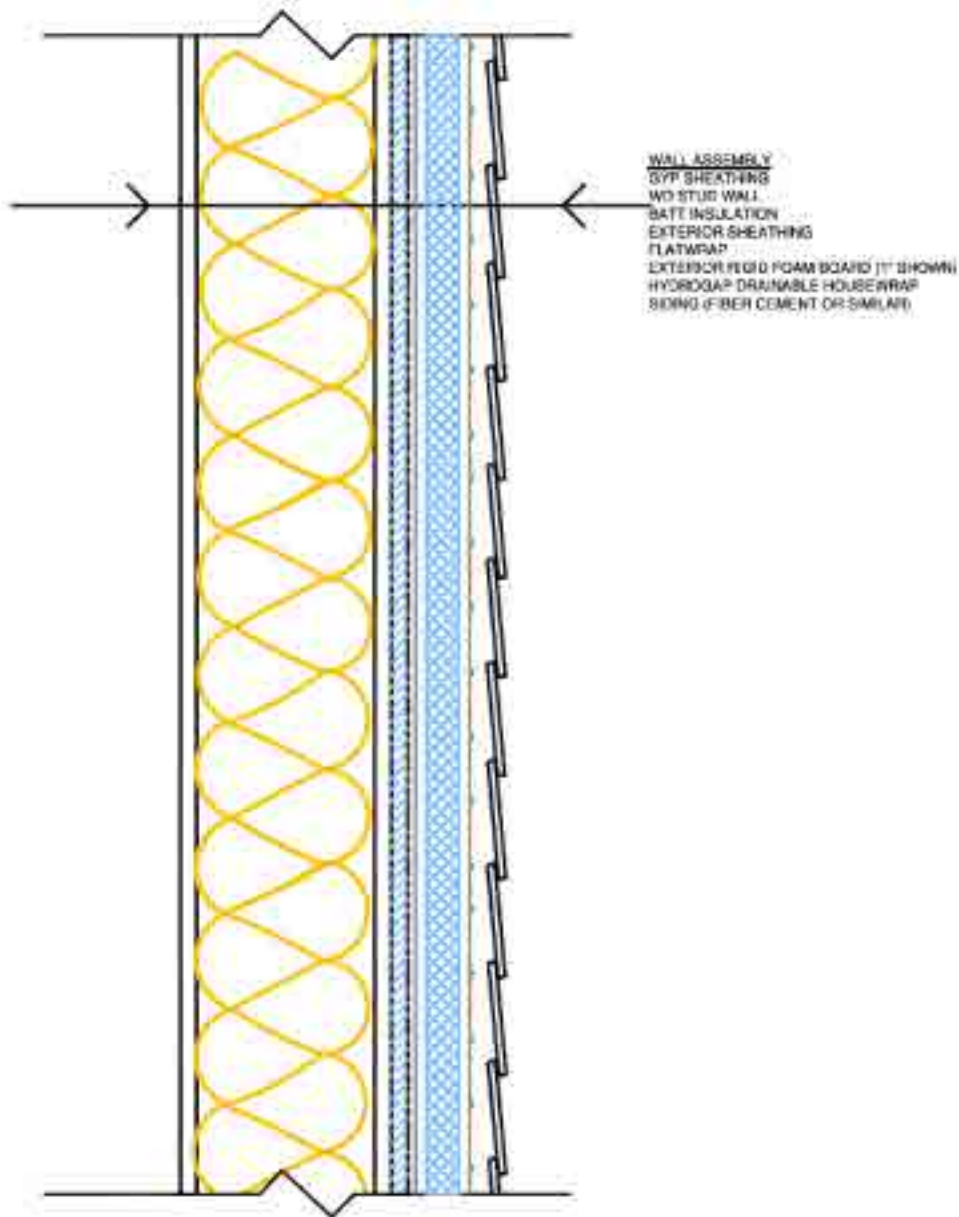
Stone & Stucco Application: Bottom Detail for Casing Bead



Stone & Stucco Application: Bottom Detail for Weep Screed

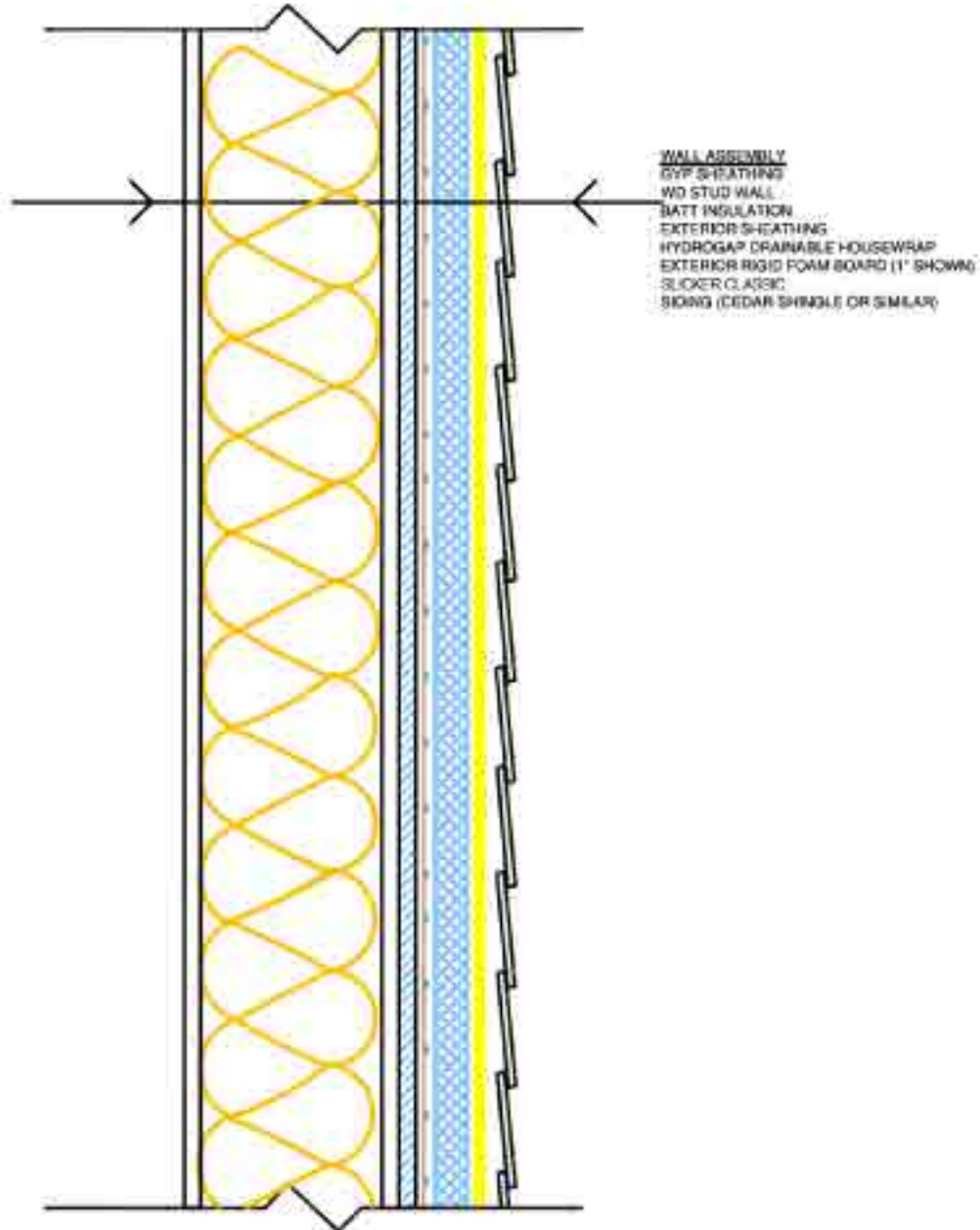


Rigid Foam Applications: Option 1



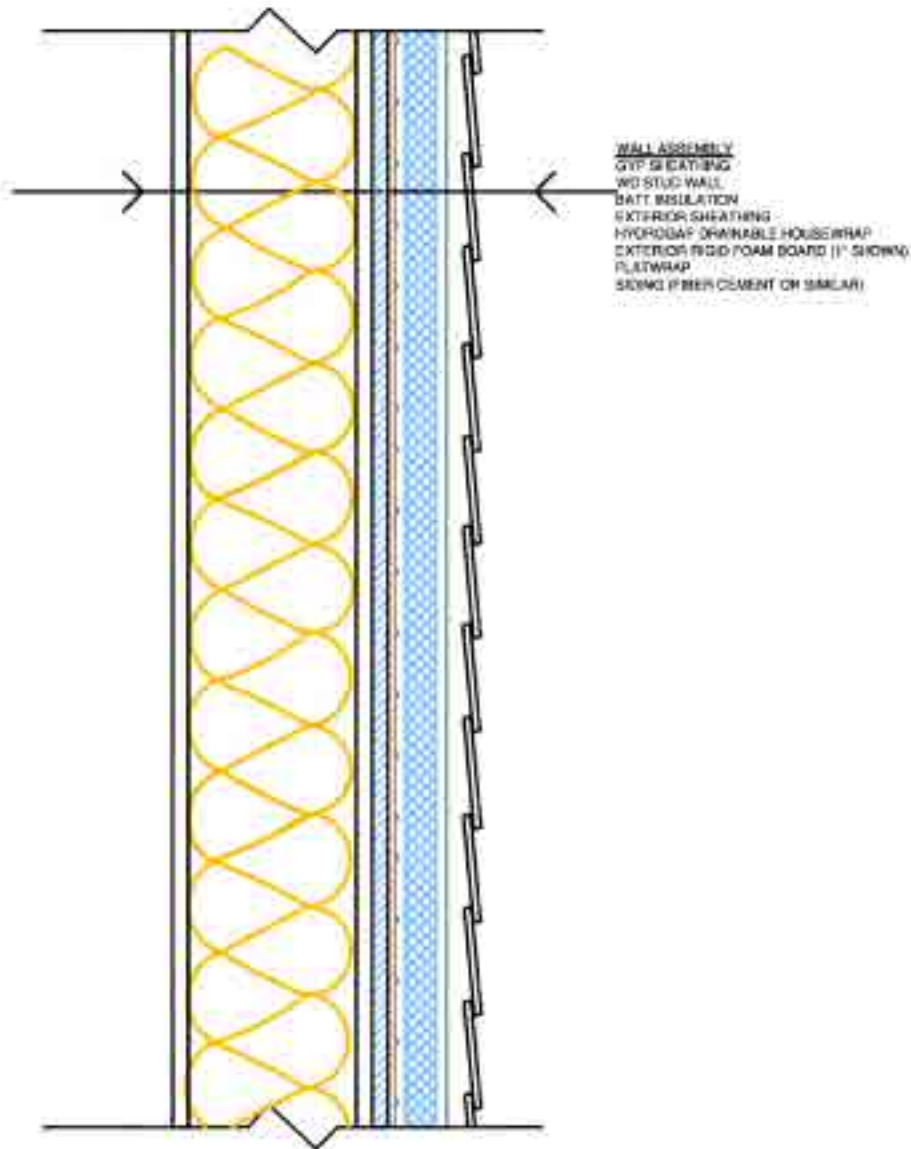
OPTION 1: FLATWRAP, RIGID FOAM AND
HYDROGAP

Rigid Foam Applications: Option 2



OPTION 2: HYDROGAP, RIGID FOAM,
SLICKER CLASSIC

Rigid Foam Applications: Option 3



OPTION 3: HYDROGAP, RIGID FOAM AND
FLATWRAP