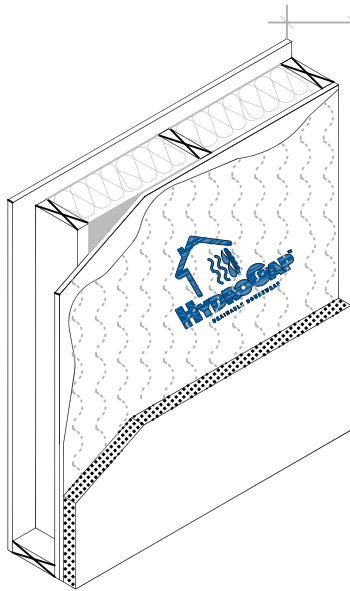
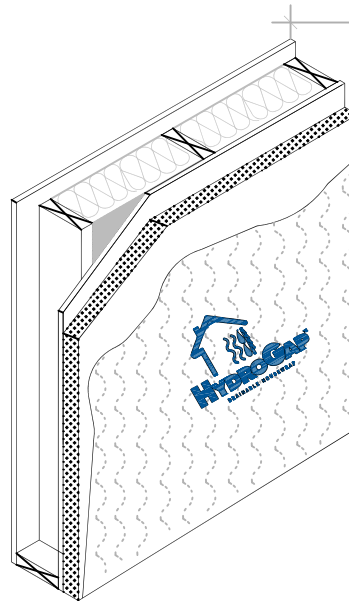


# BENJAMIN OBDYKE



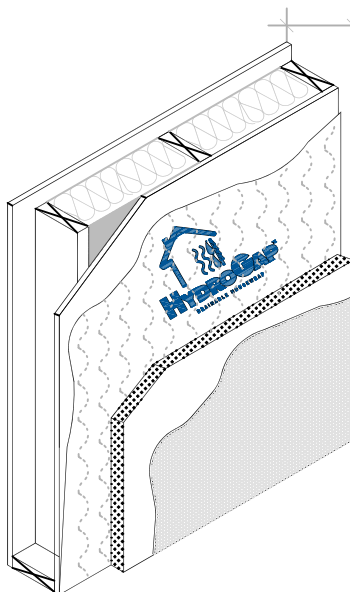
TYPICAL WALL ASSEMBLY  
 GYPSUM BOARD  
 AIR BARRIER/VAPOR RETARDER  
 BATT INSULATION  
 WOOD STUDS (METAL OPTIONAL)  
 EXTERIOR SHEATHING  
 HYDROGAP® DRAINABLE HOUSE WRAP  
 RIGID FOAM INSULATION  
 EXTERIOR CLADDING  
 (SIDING, STUCCO, OR STONE)



TYPICAL WALL ASSEMBLY  
 GYPSUM BOARD  
 AIR BARRIER/VAPOR RETARDER  
 BATT INSULATION  
 WOOD STUDS (METAL OPTIONAL)  
 EXTERIOR SHEATHING  
 RIGID FOAM INSULATION  
 HYDROGAP® DRAINABLE HOUSE WRAP  
 EXTERIOR CLADDING  
 (SIDING, STUCCO, OR STONE)

**A** TYPICAL WALL ISOMETRIC  
 RESIDENTIAL WOOD FRAME STRUCTURE w/ STUCCO  
 RIGID INSULATION INSTALLED OVER HYDROGAP

**B** TYPICAL WALL ISOMETRIC  
 RESIDENTIAL WOOD FRAME STRUCTURE w/ STUCCO  
 HYDROGAP INSTALLED OVER RIGID INSULATION



TYPICAL WALL ASSEMBLY  
 GYPSUM BOARD  
 AIR BARRIER/VAPOR RETARDER  
 BATT INSULATION  
 WOOD STUDS (METAL OPTIONAL)  
 EXTERIOR SHEATHING  
 HYDROGAP® DRAINABLE HOUSE WRAP  
 RIGID FOAM INSULATION  
 HOMESLICKER® RAINSCREEN  
 EXTERIOR CLADDING  
 (SIDING, STUCCO, OR STONE)

**C** TYPICAL WALL ISOMETRIC  
 RESIDENTIAL WOOD FRAME STRUCTURE w/ STUCCO  
 HOMESLICKER AND HYDROGAP OVER RIGID INSULATION

Cut Back Installation Method	<b>HYDROGAP® INSTALLED WITH RIGID INSULATION</b>			NTS
	BENJAMIN OBDYKE INCORPORATED 400 BABYLON ROAD, SUITE A HORSHAM, PA 19044 - 1213	TOLL FREE: 1-800-523-5261 PHONE: (215) 672-7200 FAX: (215) 672-5204	www.benjaminobdyke.com	JUNE 2014